

Building Urban Climate Change Resilience in the Philippines and Indonesia

Presented by
Vic Aquitania
Regional Director
ICLEI Southeast Asia Secretariat

What is ICLEI?

*Connecting
leaders*



*Accelerating
action*



*Gateway
to solutions*



ICLEI Offices



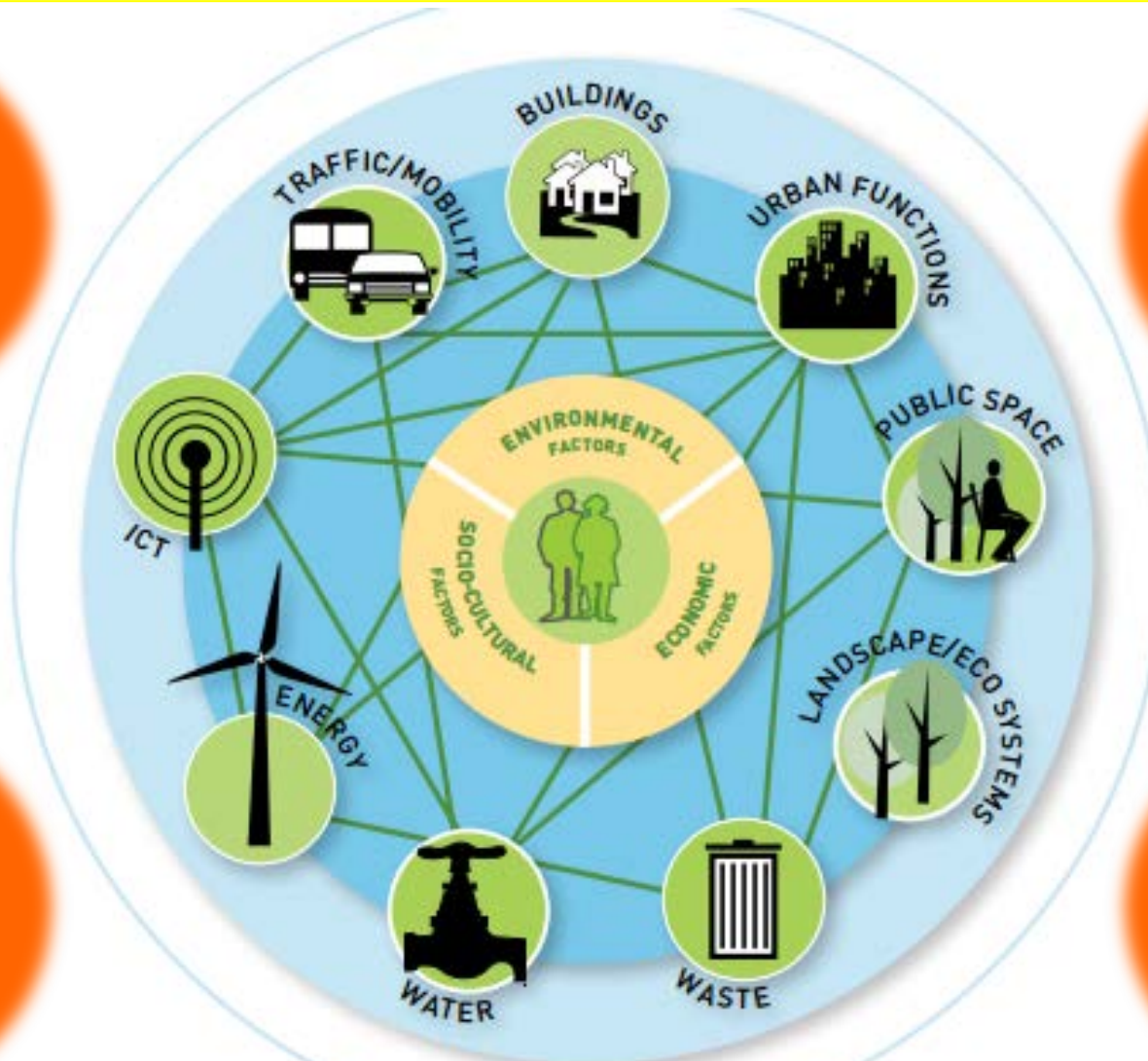
Moving in a changing environment

Population
Growth

Changing
Global
Environ-
ment

Rapid
Urbaniza-
tion

Unsustaina-
ble use of
resources



Source: SymbioCity Approach

Maybe after
the
elections ...

Let's wait and
see ...

Climate
change ...
what's next?

Tell me
something
new ...

Nobody really
knows what
will happen
anyway.

?

We've got
enough other
priorities in
our city!

Not for us
here in this
city - much
too expensive

The second time this year
that all major roads are
flooded - but, sorry: nothing
that the city can do about it.

to bridge the gap!

AsianCitiesAdapt Project

Four cities each in India and the Philippines

ACCCRN:

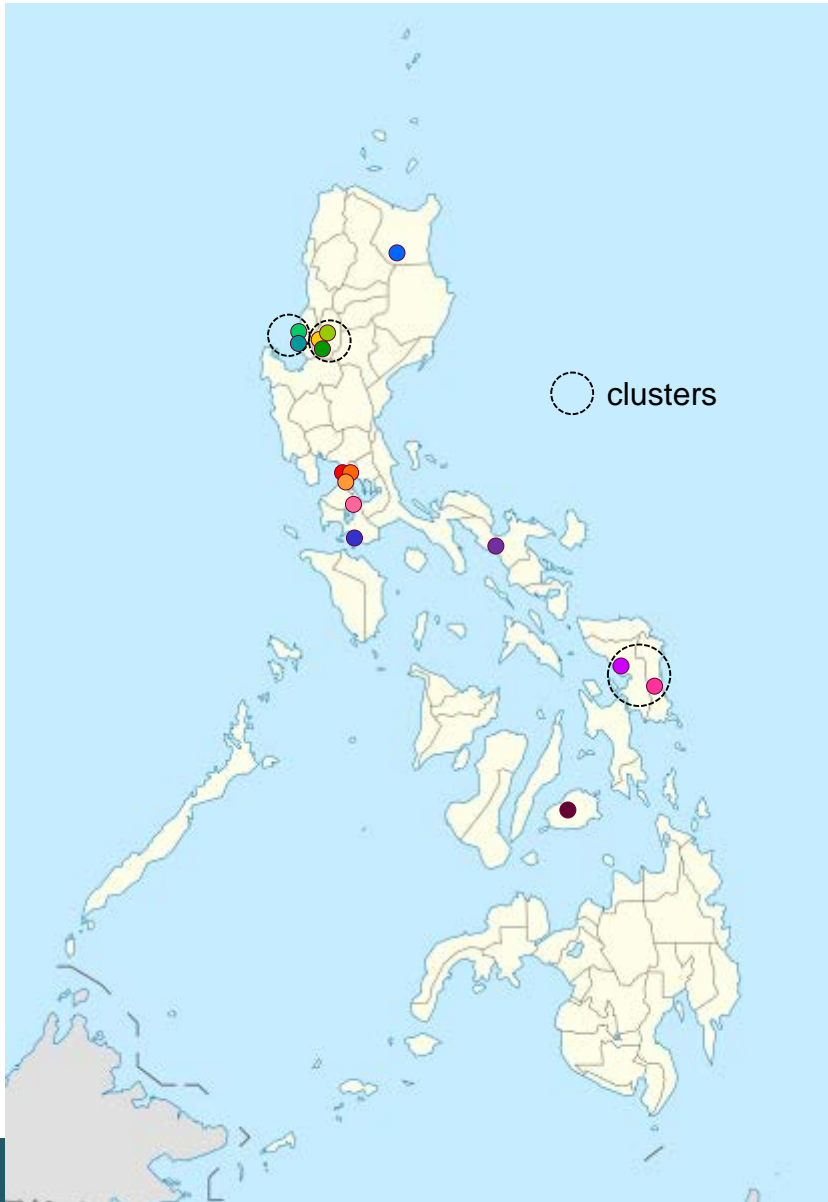
10 Cities in India

10 Cities in Bangladesh

10 Cities in Indonesia

10 + 5 Cities in the Philippines

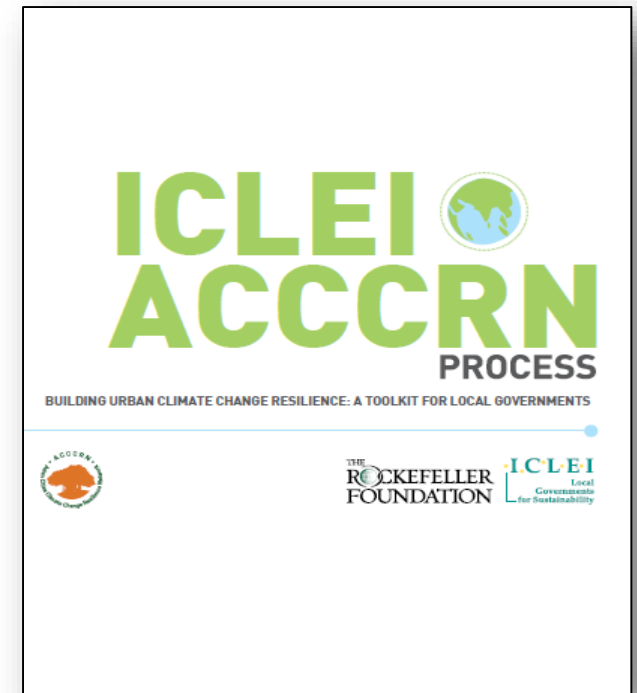
Participating Local Government Units (LGUs)



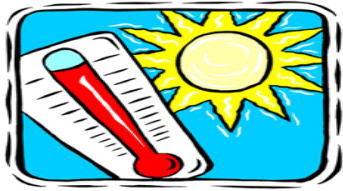
1. Quezon City •
2. Marikina City •
3. Makati City •
4. Baguio City •
5. Tublay •
6. La Trinidad •
7. San Fernando, La Union •
8. Bacnotan •
9. Tuguegarao City •
10. Batangas City •
11. Naga City •
12. Catbalogan City •
13. Borongan City •
14. Sta. Rosa City •
15. Bohol Province •

ICLEI ACCCRN Process: Building Urban Climate Change Resilience (A Toolkit for Local Governments)

- ❑ Toolkit enables local governments to assess their climate risks in the context of urbanisation, poverty and vulnerability and formulate corresponding resilience strategies.
- ❑ It provides a streamlined process that is simple and yet rigorous, and which can be implemented by the cities themselves, with only minimal need for external support.



Benefits to Cities from ICLEI ACCCRN Process



**Awareness
generation about
potential risks and
city's vulnerability**



**Better management of
climate change impacts**



**Knowledge exchange
with other cities and
technical partners**

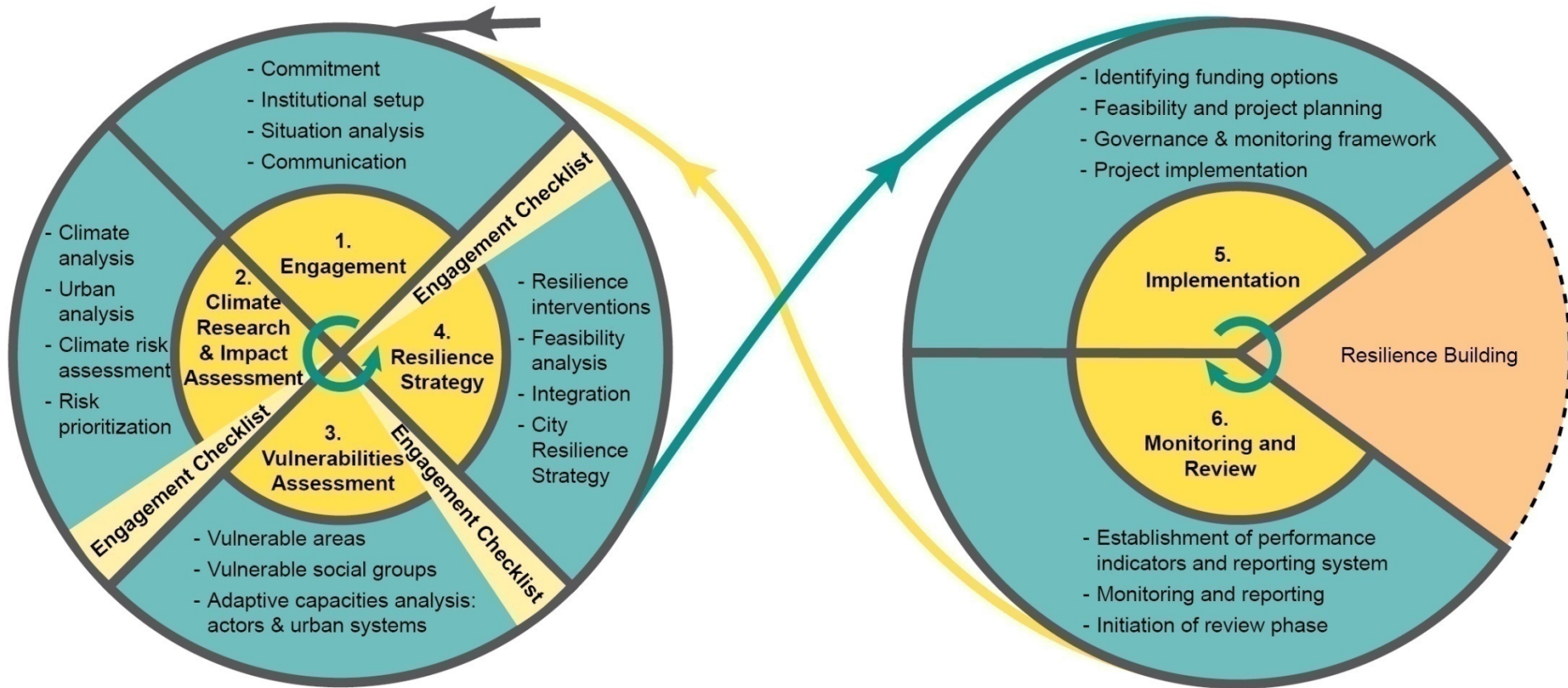


**Development of
Climate Resilience
strategy**



**Integrating the
resilience strategy into
urban planning**

ICLEI ACCCRN Process



Set of 16 tools, refined through trial as well as internal and external review

Implementing the UCCR Process in PH

- **Clustering approach** – invite adjacent local governments (LGs) to participate in workshops as observers of the ACCCRN process
- **Coordination with other entities working on resilience** – may include national government agencies, academe, NGOs
 - Assistance from the *Local Government Academy (LGA)* in identification of Philippine ACCCRN cities
 - Partnership with *University of the Philippines – Los Baños* in the conduct of GIS training for ACCCRN cities
- **Integrating existing initiatives and tools in the UCCR**
 - **Climate Budget Tagging** of the CCC, DILG, and DBM, with support from World Bank
 - **Asset management** of TSJ Consulting and
 - **CDIA Prioritization Toolkit**

Shared Learning Dialogue (SLD) Process



- ❑ to engage not only various departments within the city government but also other local stakeholders
- ❑ facilitate multi dimensional information sharing with everyone contributing information and experiences, and everyone learning from the exchanges as well
- ❑ helps to break down traditional boundaries between government, academic and community actors and to conduct the process in an open manner
- ❑ the process is iterative, with several opportunities for members to meet and take their thinking to the next level.

Potential Bottlenecks to Implementation

- Political Dimension
- Stakeholder Engagement / Public Consultation
- Sources of Climate Financing

Challenges

- **Data access and availability** – absence of relevant, up-to-date, and quality data; fragmented sources of data
- **High awareness of LGs on resilience but skewed toward DRR** – communities readily see the impacts of DRR initiatives; enabling framework to mobilize resources for DRR already existing
- **Vertical and horizontal integration** – simultaneous work at the national and sub-national level; issues on fragmented resiliency initiatives
- **LGUs are willing to co-fund and allocate resources for resiliency initiatives.**
- **Some LGUs tend to protect their image**, affecting their risk assessment.

Options to Address Challenges

- Establish and improve linkages / contacts with concerned agencies
- Updating of available maps
- Provision of updated communication facilities
- Upgrading of technical competencies of city government staff / Provision of trainings and seminars
- Mainstream adaptation in local governance
- Understand what adaptation planning entails and how its components are in line with development priorities
- Strengthening of research and development at the city level

Support Requested from Partnership

- Technical Training / Provision of capacity-building activities
- Sharing of Recent Technologies (systems/programs)
- Assist the City to the concerned national agencies especially for their support to the project
- Assist the City in updating available maps and in producing other useful maps

Case examples of pilot projects Under the Small Grants

The Small Grants Project aims to:

- Provide tangible financial support for city-community collaboration and initiatives, and encouraging local stakeholders to become fully involved in the urban climate change resilience process
- encourage the formation of genuine, sustained partnerships between the ACCCRN participating cities and their key external stakeholders, the grant is delivered directly to the cities' partners.

Completed Projects:

- **Baguio City:** Engaging Communities and the City Government in Addressing Water Security, Sanitation, and Urban Resilience Challenges in Baguio City (*UP Baguio*)
- **Santa Rosa City:** Building Capacity for Urban Agriculture in CCA (*UPLB School of Environmental Science and Management*)

Project Highlights



Ongoing Projects:

- **Catbalogan City:** Resilient *danggit*-farming
- **Tuguegarao City:** Installation of Hybrid Solar Power Integrated with Water Harvesting Facility at the People's Gymnasium (*Cagayan State University*)
- **Naga City:** Climate-Associated Risk Assessment for CCA and DRRM in Naga City, Camarines Sur: Validating a Space-Based Decision Support System for Urban Resilience (*Manila Observatory*)
- **Marikina City:** Young, Empowered, and Service-Oriented Filipinos toward Climate Leadership, Disaster Resilience, and Responsible Citizen Participation (*YesPinoy Foundation*)

Tuguegarao City (CSU):

Targeted project outcomes:

- Installation and integration of a crystalline silicon PV system into the existing Peoples' Gymnasium.



● Thank you for listening.



seas.iclei.org



www.facebook.com/ICLEISEA



www.twitter.com/icleisea