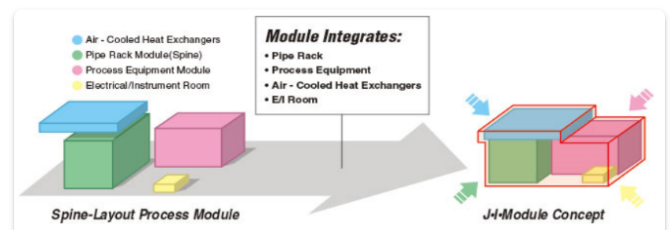
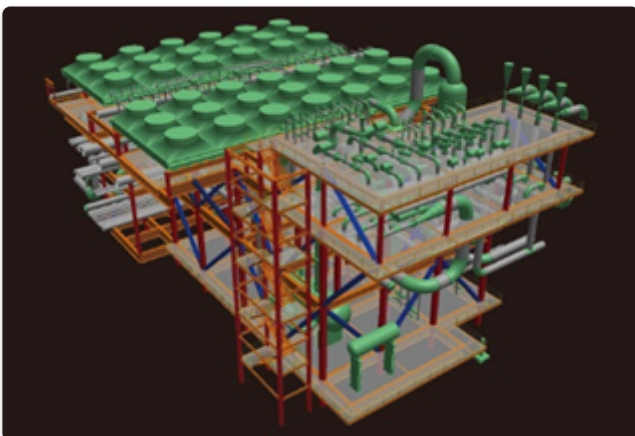


Modular method

The modular method is a construction method in which a group of facility structures arranged with steel frames, piping, equipment, etc. are constructed in a place different from the construction site, transferred to the construction site by a dedicated ship, and the plant is completed by joining each module.

- Man-hours of on-site work can be greatly reduced, and it is possible to respond to plans to perform on-site work according to the period when the weather is stable.
- JGC proposes "J.I.Module", an integrated module concept that greatly improves the conventional module method.
- By minimizing local work, the number of field workers and the period of stay can be reduced, and the environmental burden (land construction for residence and construction, drinking water taking, food transportation, living wastewater and garbage, etc.) by camp operation during the construction period can also be minimized. In addition, the environmental burden by temporary yard construction, which is usually required, can also be reduced.

Photo (left): 3D layout of modules, Photo (right): "J. I. Module" concept



Company Name

JGC GLOBAL Corporation

Company Web Page

<https://www.jgc.com/en/>

Technology Web Page

<https://www.jgc.com/en/business/tech-innovation/epc/jim-module.html>

Type

- Climate-resilient development planning

Form

- Engineering

Potential User

- Policy makers
- Private sector

Sector - Category - Sub-Category

- Others
 - Others
 - Others

Cost Range (K USD)

- > 10,000

Countries with Track Record

- Russia, Malaysia, Australia, Canada

Track Record

- Introduced in developing countries by themselves

SDGs

- 9. Industry, Innovation, and Infrastructure
- 13. Climate action

Target of Adaptation

- Quality of Life, Industry

Adaptation Measures

Levels

- Adaptation, Minimization of impacts

Time Scale

Current, Future (Short Term)