



Promotion of Scientific Knowledge Sharing

AP-PLAT

- Asia-Pacific Climate Change Adaptation
Information Platform –

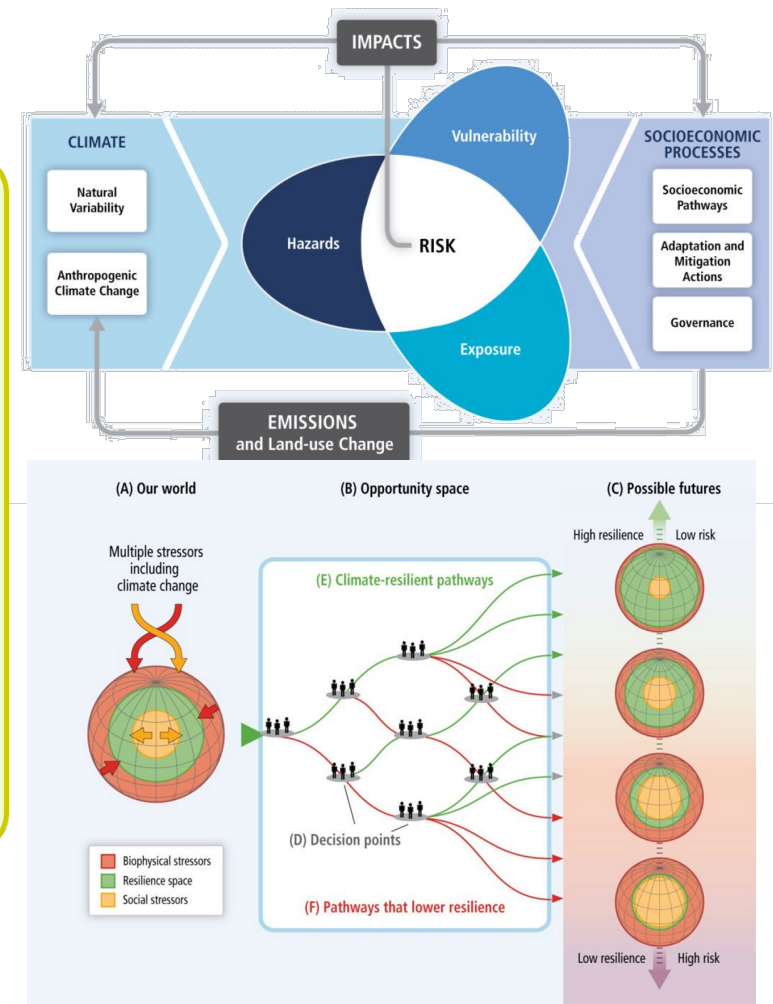
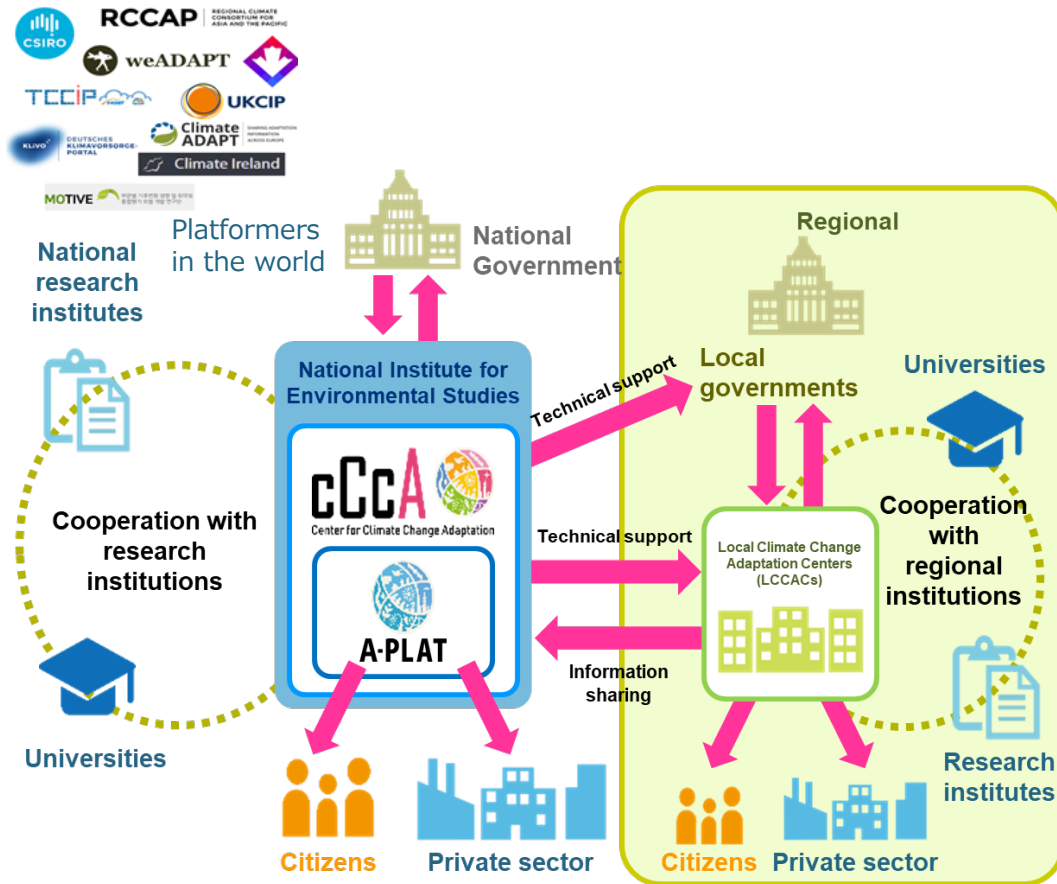
APAN Forum CA×DRR session

March 10, 2021

YOSHIKAWA, Keiko

Deputy Director, Center for Climate Change Adaptation (CCCA),
National Institute for Environmental Studies (NIES)

Center for Climate Change Adaptation

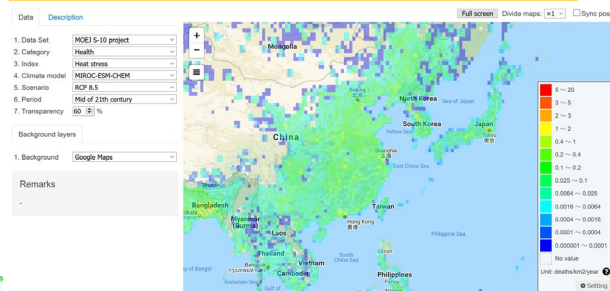
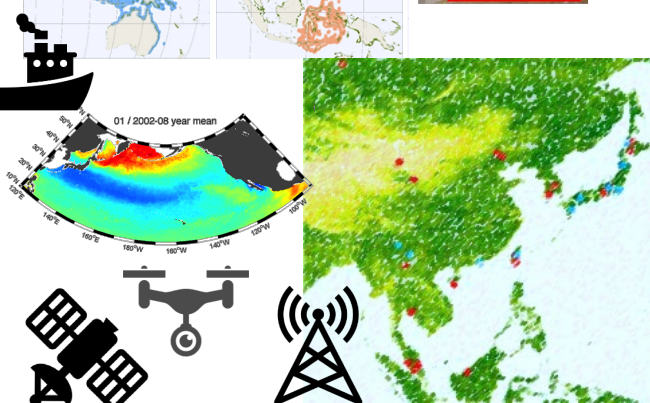
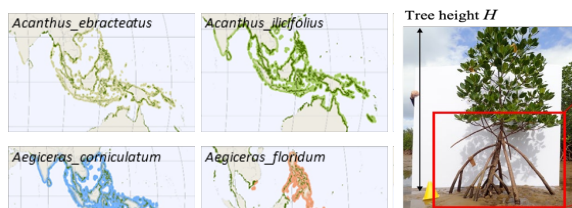


Contribution from scientific knowledge

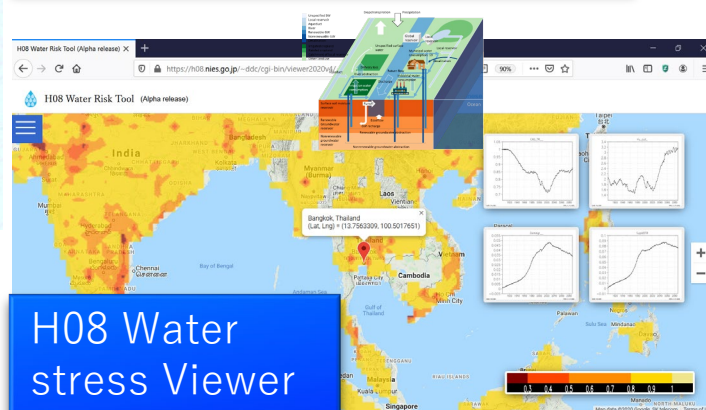
observation, monitoring and detection of climate change and its impacts

predicting the impacts of climate change

adaptation strategies in consideration of social changes

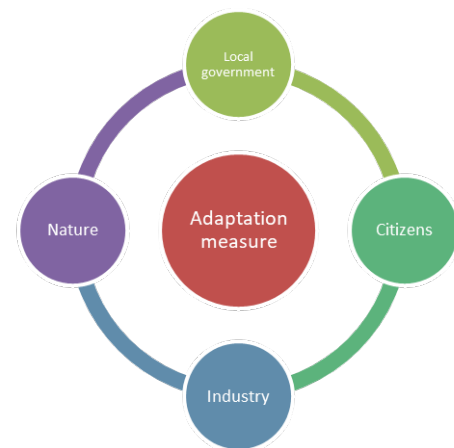
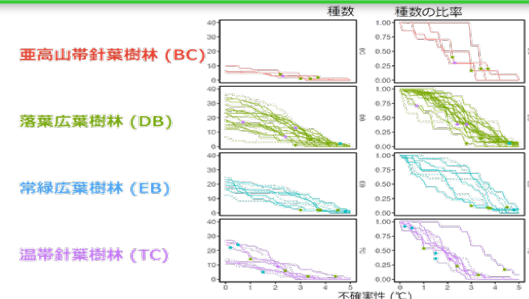


Heat stress prediction



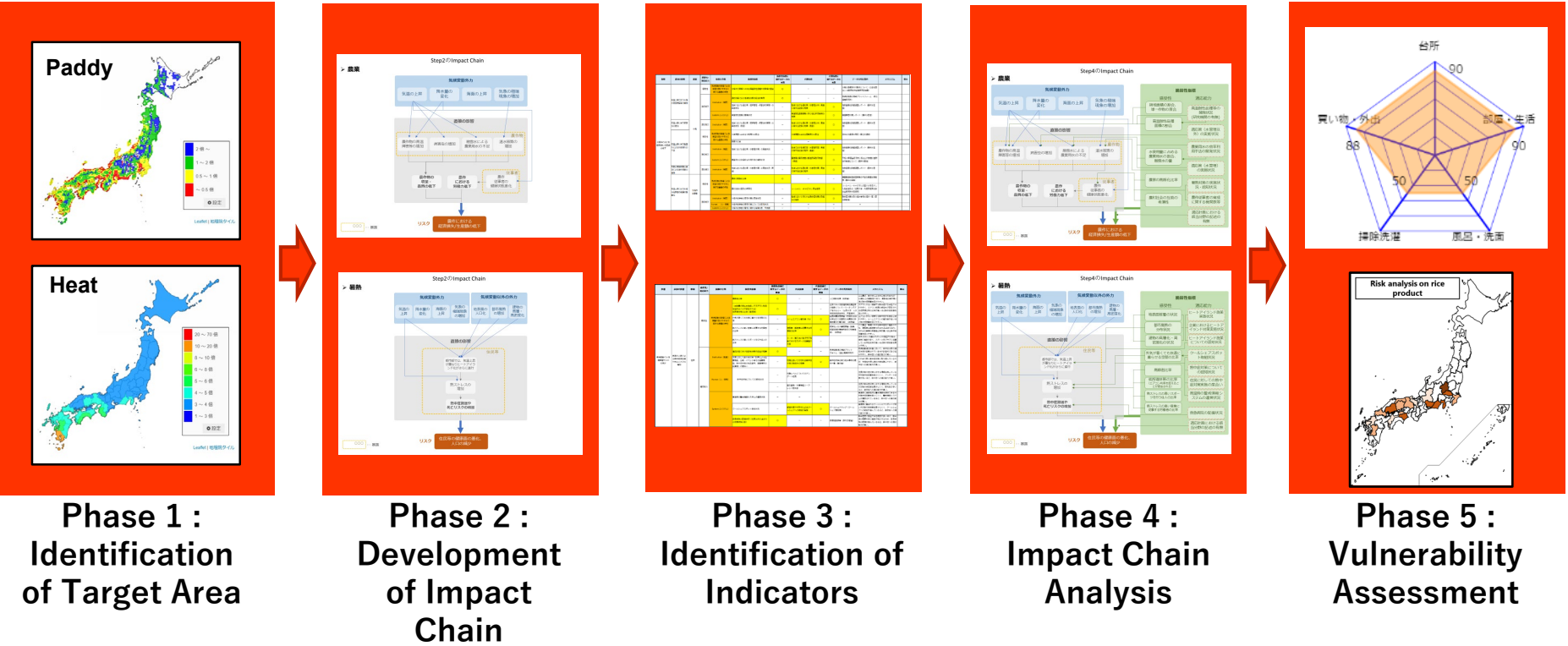
H08 Water stress Viewer

Adaptive Capacity → planning



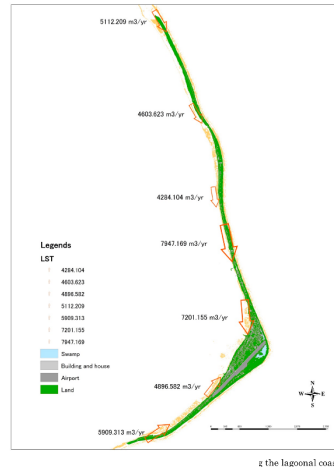
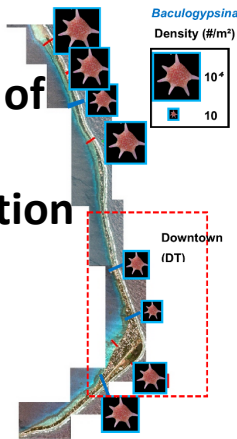
Vulnerability Pluralistic Evaluation System I

Purpose:
To understand what elements are vulnerable, as well as the factors that could amplify climate change risk so that local adaptation measures can be identified and developed.



Adaptation to Climate change by conservation of coral-reef ecosystem functions

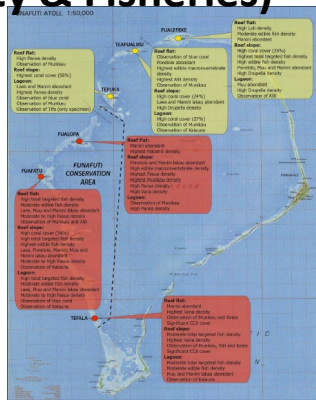
**Conservation of land
(Sand production
by corals and
forams)**



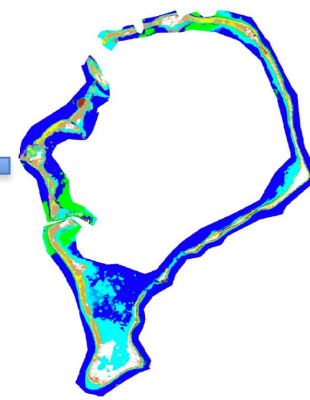
Sand production

Sand transport

**Conservation of biological resources
(Biodiversity & Fisheries)**

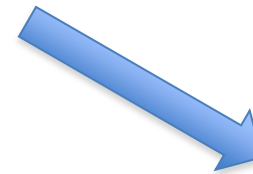


Biodiversity survey
Inventory



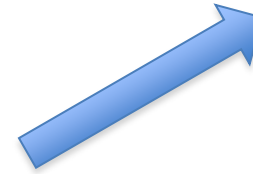
Estimation of biodiversity
using satellite data

Important area:
Source of sand
production by
corals and forams

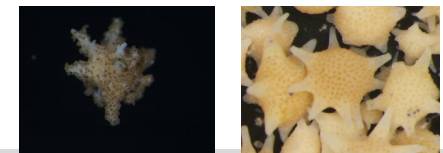


Integration

Important area:
High biodiversity



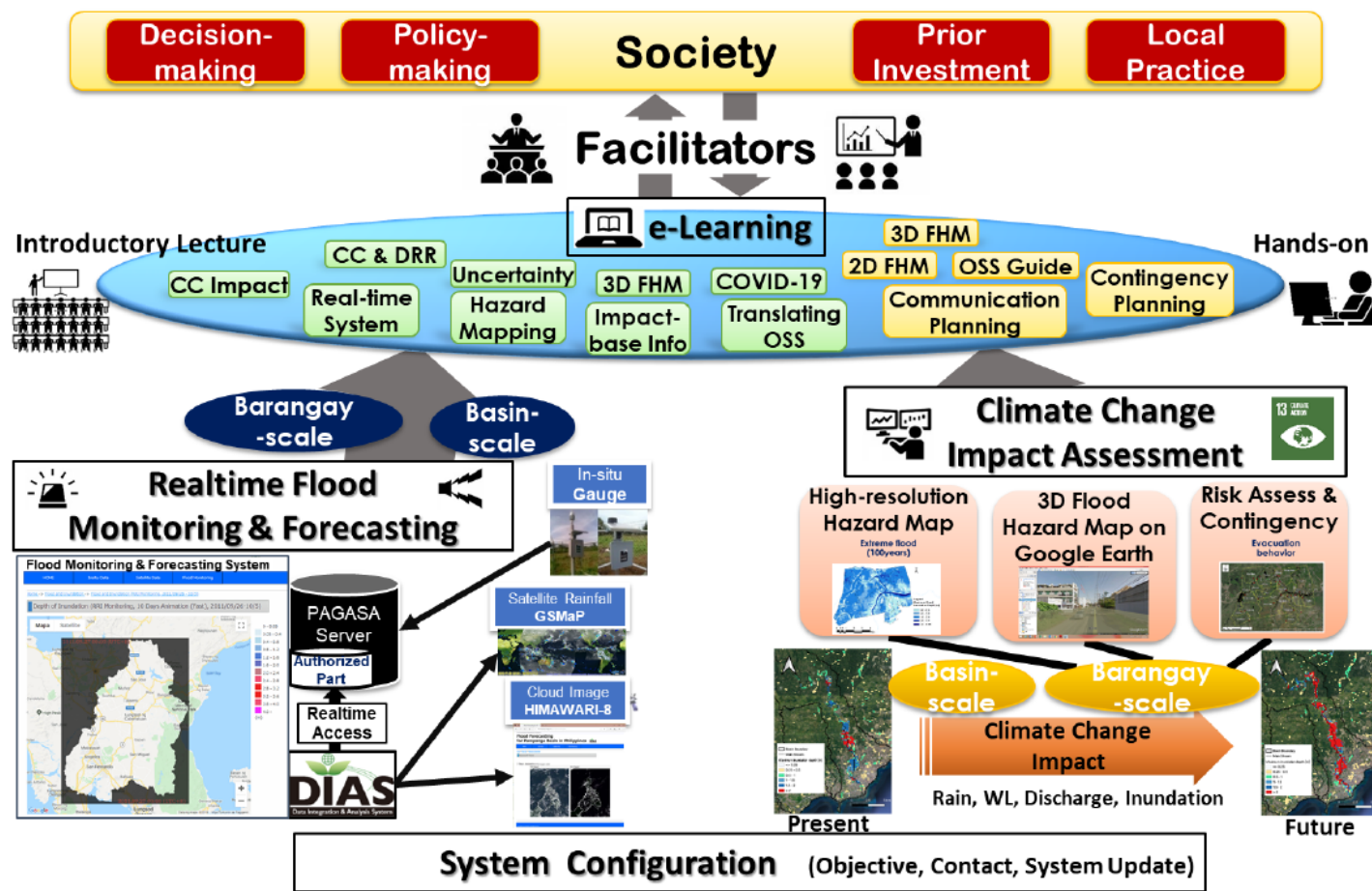
Identifying important
areas for conservation of
land and biological
resources



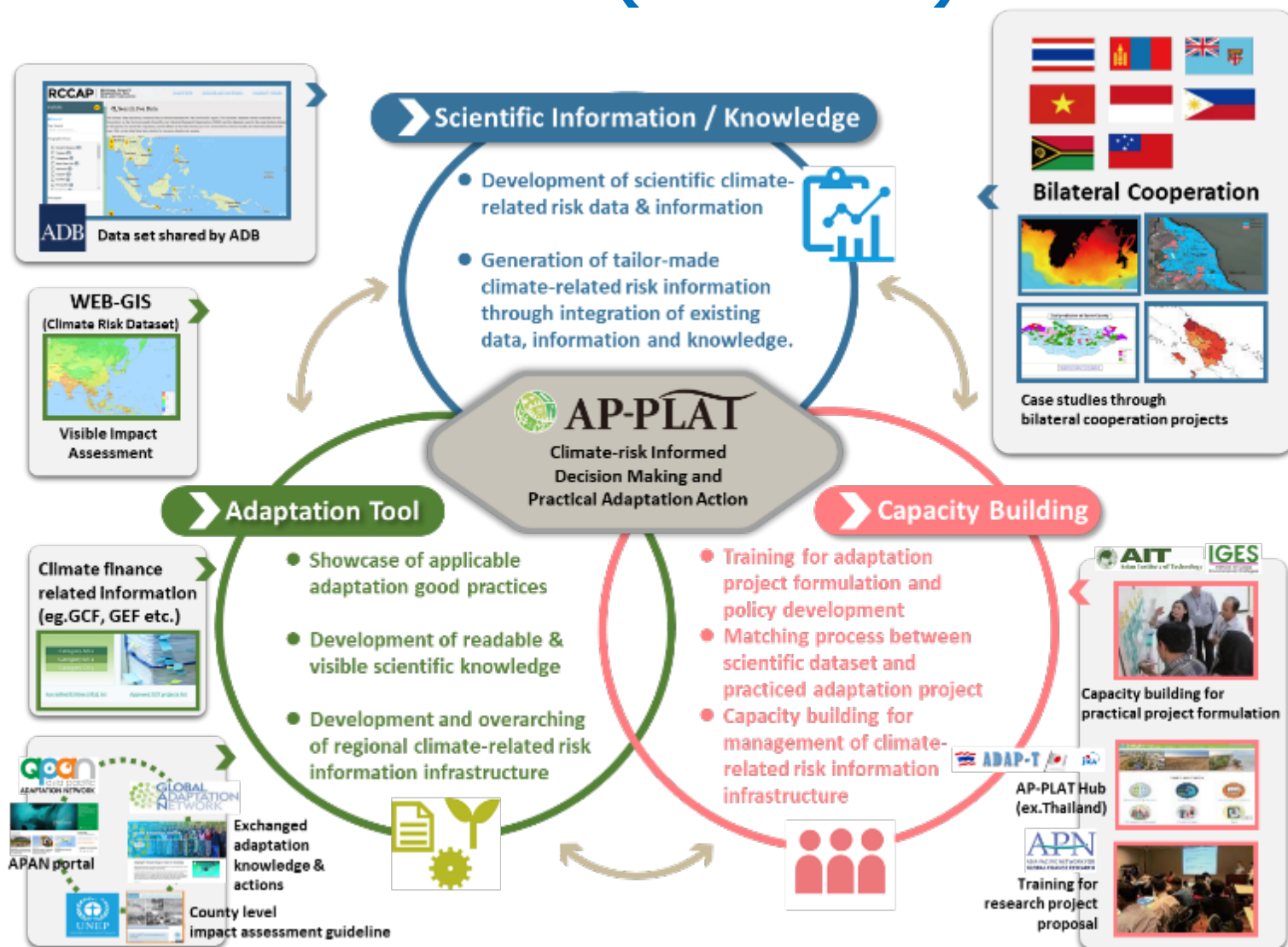
Foram culture

DRR Synthesis System

ONLINE SYNTHESIS SYSTEM (OSS)



Asia-Pacific Climate Change Adaptation Information Platform (AP-PLAT)



Please visit AP-PLAT website

