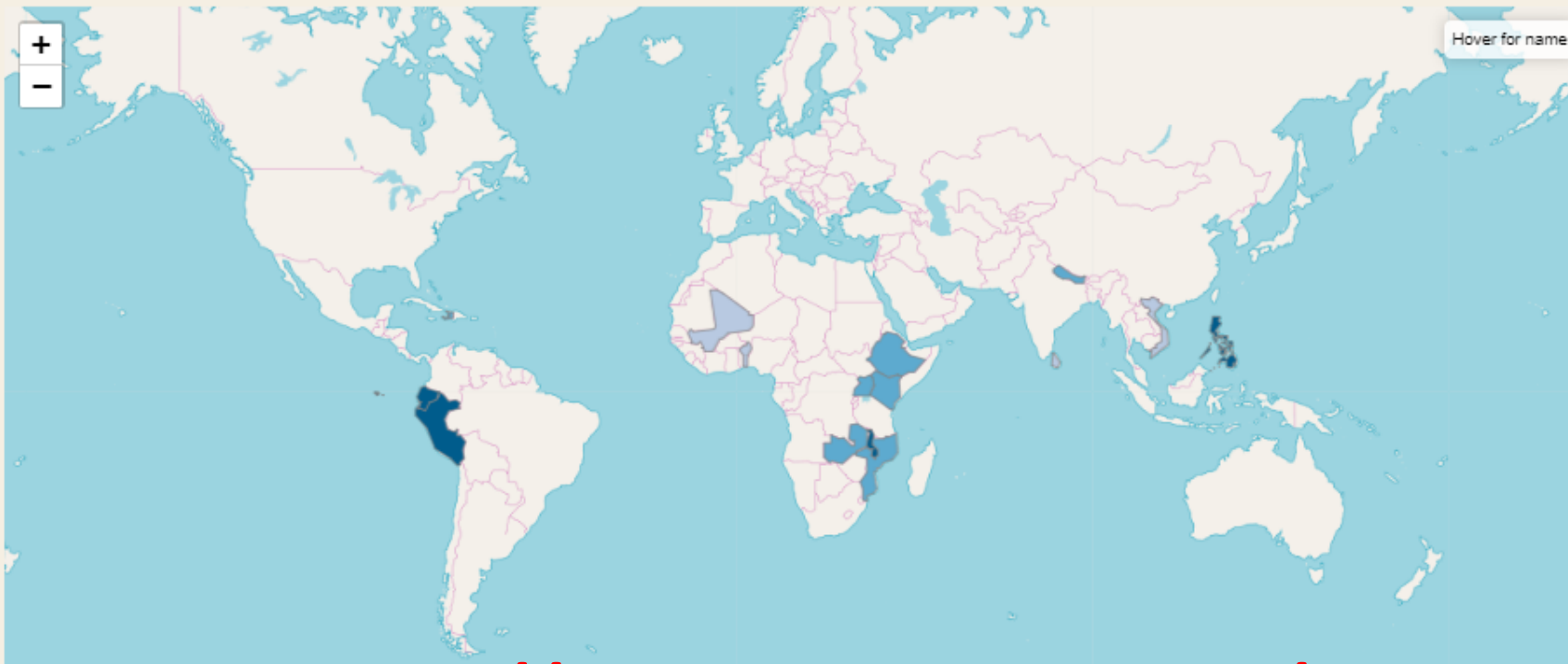




Community Risk Assessment - 85311 communities in 15 countries included

Relieving the suffering of individuals affected by disasters is at the heart of humanitarian action. However, given limited funding, humanitarian actors cannot reach all people in need. They have to identify the geographic areas that are most affected by a humanitarian disaster or crisis and, within those areas, the individuals that are most in need. Currently, this prioritization process takes time and can be subjective. The Community Risk Assessment dashboard forms a data-driven alternative solution.

- Go to country dashboard ▾
- About
- How it works



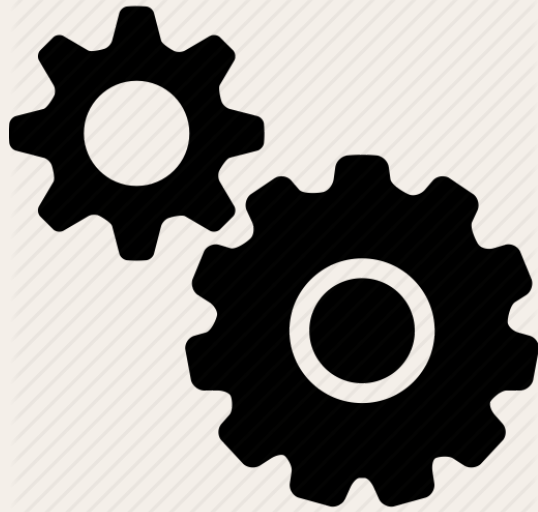
<https://dashboard.510.global/>



About the Database



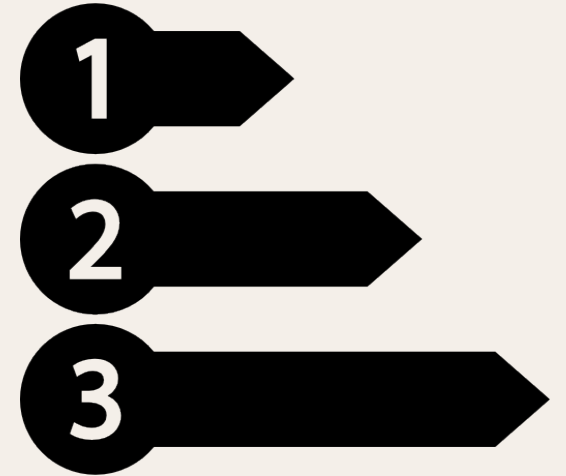
**OPEN DATA
COLLECTION**



**DATA
INTEGRATION**



**DATA
VISUALIZATION
& ACCESS**



**PRIORITIZATION
AND DATA
PREPAREDNESS**



INFORM-framework as basis for Risk

Risk score (1-10)

Vulnerability (1-10)

Lack of coping capacity (1-10)

Hazards exposure (1-10)

Socio-economic vulnerability

Vulnerable groups

Institutional

Infrastructure

Natural disasters

Human conflicts

Development & Deprivation

Inequality

Aid dependency

Uprooted people

Health conditions

Children U5

Recent shocks

Food Security

DRR

Governance

Communication

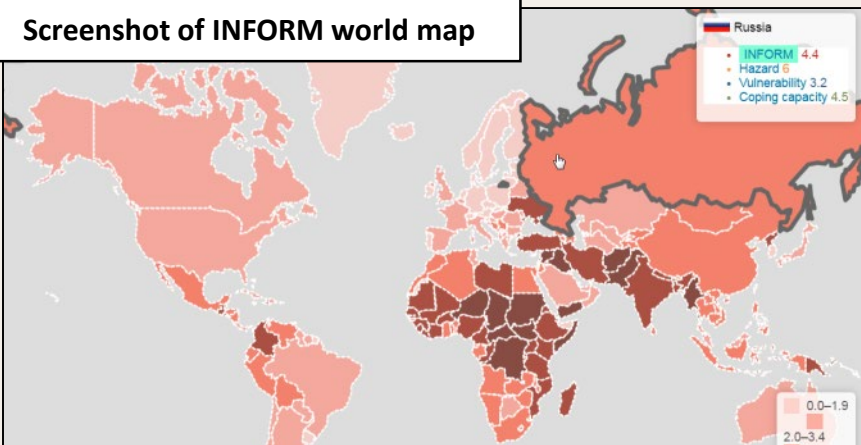
Infrastructure

Access to Health Care

INFORM-framework

- The INFORM-framework assigns a risk-score to every country in the world.
- It thus handles risk on a national level, whereas *Community Profiles* does the same on a subnational, municipality, level.
- The risk score contains three main components:
 1. *Vulnerability*: how relatively vulnerable is the population when affected by hazards.
 2. *Coping Capacity*: what institutional and infrastructural coping capacity is there to cope with the effects of hazards.
 3. *Hazards exposure*: how widespread are current or projected hazards?
- See www.inform-index.org for more information.

Screenshot of INFORM world map





COMMUNITY RISK

IMPACT DATABASE

PRIORITY INDEX

COUNTRY

EXPORT

HOW IT WORKS

MAP

TAB

Predicted damage class (1-5)

Typhoon

Mangkhut

129 Municipalities predicted (129 selected)



Predicted Impact

Predicted damaged houses per municipality



Predicted damage class (1-5)

3



Disaster features

Disaster features (specific for disaster event)



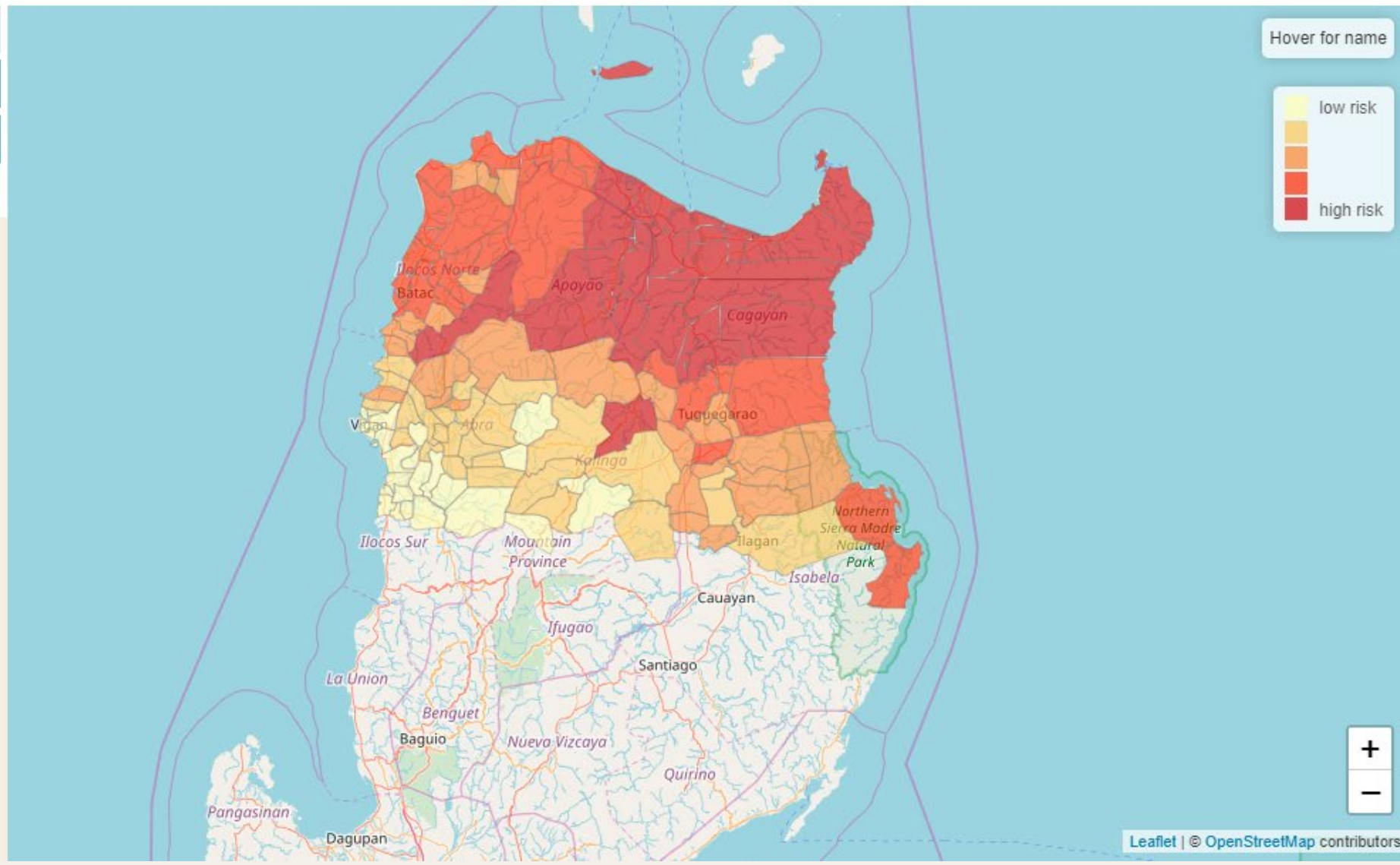
Community Risk features

Relevant features from Community Risk on Exposure, Vulnerability or Coping Capacity



Geographic features

Geographic features (not specific for disaster event)





To know more about the 510 database,
please contact:

**Marc van den Homberg,
Scientific Lead 510 Data Team
Netherlands Red Cross**

mvandenhomberg@redcross.nl