

A scenic landscape photograph showing a village with traditional wooden houses on stilts along a riverbank. In the background, there are large, rugged mountains with some clouds. The sky is blue with scattered white clouds.

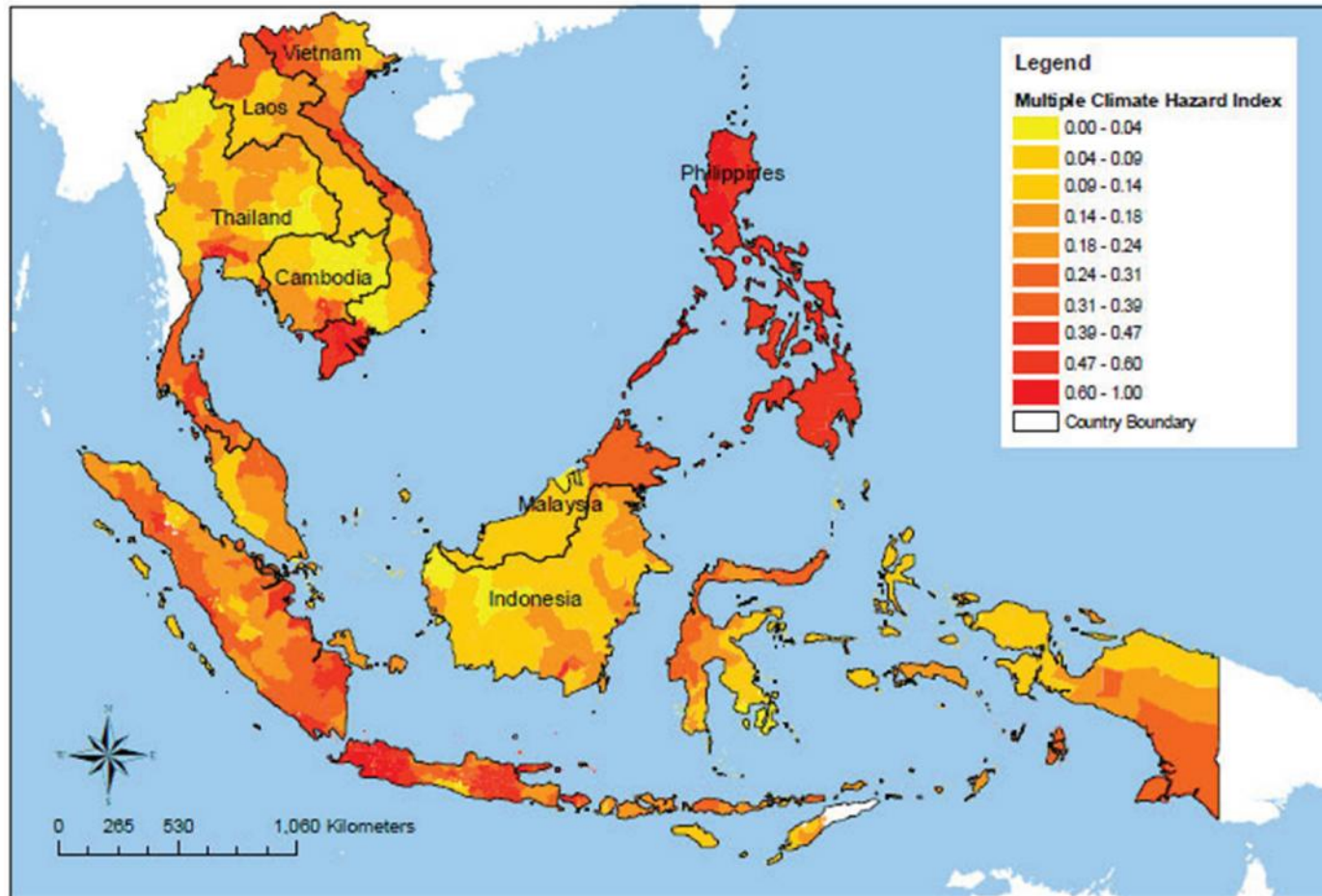
# **Increasing Effectiveness of Adaptation Mainstreaming Initiatives**

**Mone Nouansyvong,  
Ministry of Natural Resources and Environment,  
Lao PDR**

# Content

1. Overview of climate change and impacts in Laos
  - Location
  - Climate change in Laos
2. Introduction of the adaptation mainstreaming initiatives
  - Terms
  - Climate change mainstreaming in practice
3. Observation and lesson learned

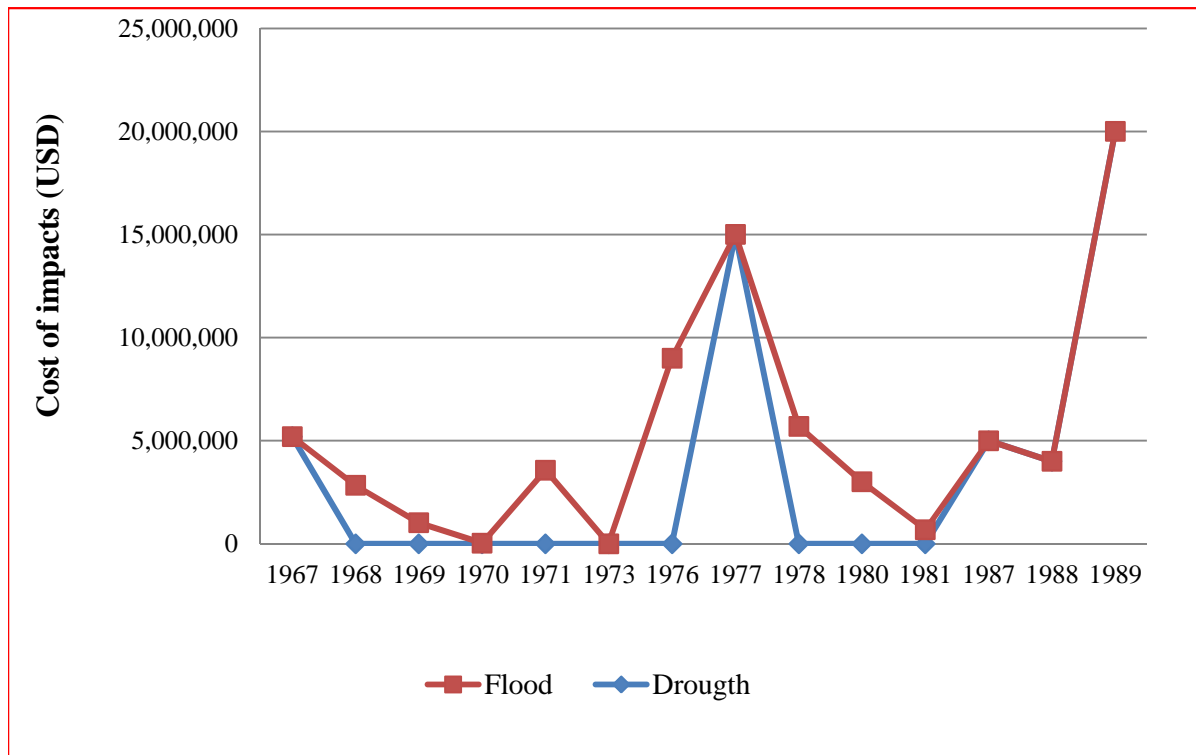
# Overview of Climate Change in Laos



# Overview of Climate Change in Laos

- The SEA START (2005): temperature change in the Low Mekong Basin (LMB) region will vary from baseline condition within the range of 1 °C ~ 2°C; the region will have longer summer periods with shorter winters. Precipitation is on the rising trend between 10% and 30%, with the highest increase in the eastern and southern part of the Lao PDR.
- World Food Program (2007) predicted that 46 percent of the rural population in Lao PDR are vulnerable to drought and 10 percent will face food shortage.

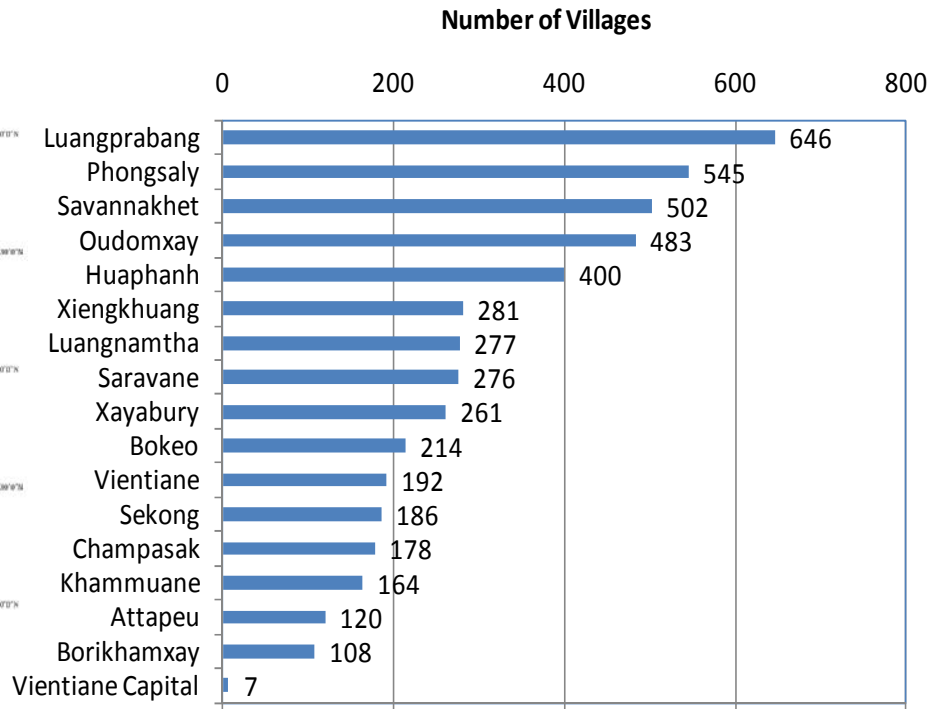
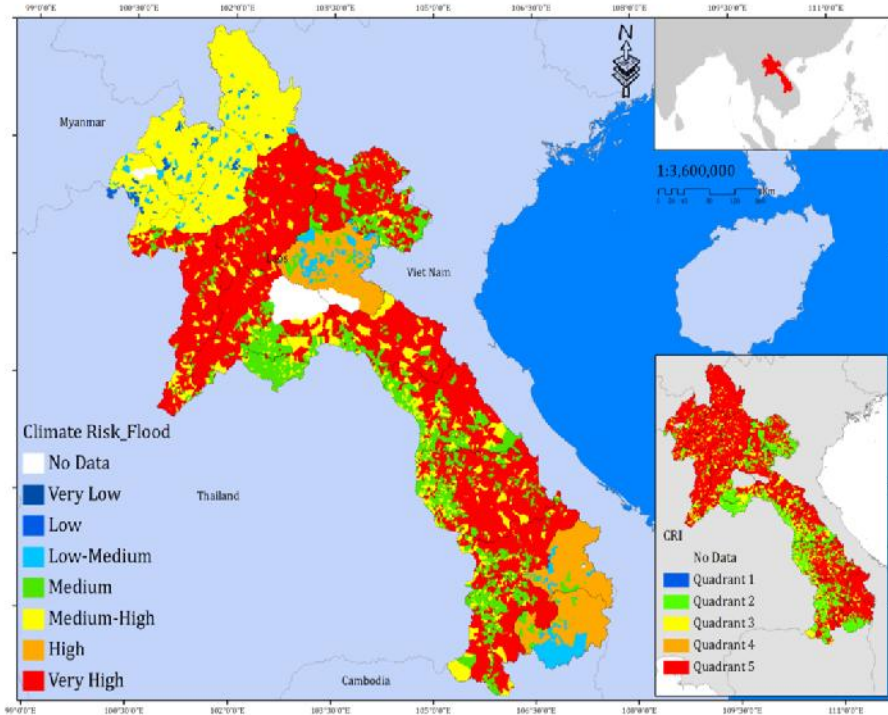
# Overview of Climate Change in Laos



Heavy Flood 2009: US\$ 85 million

Ketsana Cyclone 2010: US\$ 58 million

# Overview of Climate Change in Laos

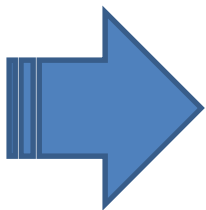


# Climate Change Mainstreaming in Practice

## Definitions/Terms

- **Climate change mainstreaming** is a process of considering climate risks in the developments including identification and implementation of measures to address the risks.
- **Effectiveness** is the capability of producing a desired result or the degree to which objectives are achieved and the extent to which targeted problems are solved.

# Climate Change Mainstreaming in Practice



Policies/Plans

Organization/  
Network

Policies/Strategies

National Environment and Flood  
Management Steering Committee

Programs

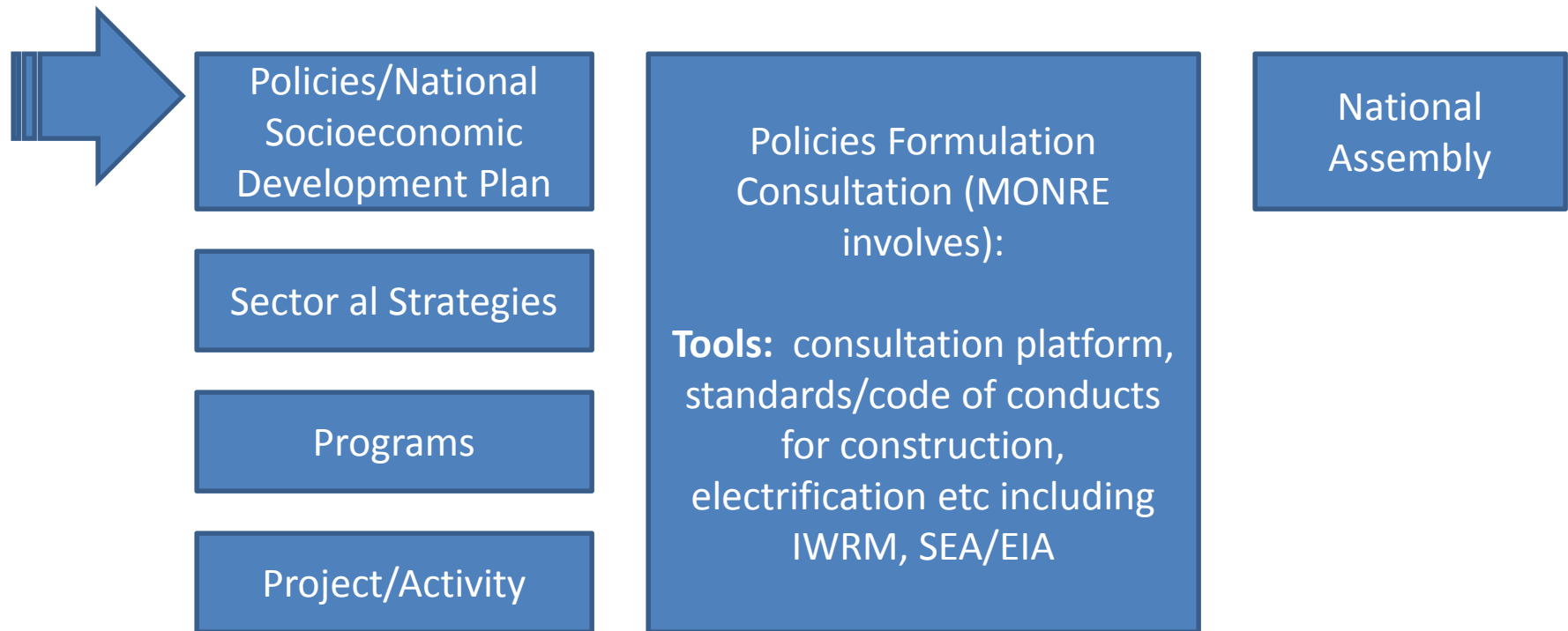
National Climate Change Working  
Group

Project/Activity

Project-based Environment-Climate  
Change Group



# Climate Change Mainstreaming in Practice



# Climate Change Mainstreaming in Practice

No		
1	Policy/Strategy/ Programs	<ol style="list-style-type: none"><li>1. The National Strategic Plan for Disaster Risk Management (2003)</li><li>2. NAPA (2009)</li><li>3. Strategy on Climate Change of the Lao PDR (2010)</li><li>4. Climate change and health adaptation strategy in Lao PDR (2011)</li><li>5. National Socio-Economic Development Plan (NSED) 2011-2015 (2011)-<i>Mitigation of flood and drought</i></li><li>6. <i>Strategy for Agriculture Development 2011-2020 – improve crop variety for increase resilience</i></li></ol>

# Climate Change Mainstreaming in Practice

2	Project/ Activity	<ol style="list-style-type: none"><li>1. Climate Change Adaptation Initiatives-CCAI (MRC)</li><li>2. Capacity Enhancement for Coping with Climate Change (ADB)</li><li>3. Improving the Resilience of the Agriculture Sector in Lao PDR to Climate Change Impacts (UNDP)</li><li>4. Effective Governance for Small-scale Rural Infrastructure and Disaster Preparedness in Lao PDR (UNDP)</li><li>5. Technology Needs Assessment -TNA (UNEP)</li><li>6. Climate Change Education and Awareness (GIZ)</li></ol>

# Observation and lesson learned

- Climate change mainstreaming in Laos is in initial stage; lack of climate change oriented policies/project planning procedures
- Although some policies in place, implementation depending on financial and technical support from international alliance
- Mainstreaming is challenge due to high cost of adaptation technology

**Thank You**

