



**With projected sea level rise of 0.59 meters, can they still forage for shrimps with their bare hands in the sea floor for their food and income?**



# MFF in summary...



**Policy relevant** – supporting national legal and policy frameworks

**People centered** – assisting coastal populations in the Indian Ocean

**Partnership based** – seeking to meet the needs of all partners

**Investment orientated** – recognising coastal ecosystems as valuable natural infrastructure

# Programmes of Works (PoWs): From strategy to action

## Climate Change, Gender & Communications are Cross Cutting

### Knowledge

1. Knowledge base for coastal management
2. Ecologically and socio-economically sound rehabilitation
3. 'Reef-to-ridge' approaches
4. Ecosystem valuation
5. Environmental evaluation of post-tsunami response.

### Empowerment

6. Civil society awareness and participation in decision-making
7. Building capacity of coastal managers
8. Environmentally sustainable livelihoods
9. Community resilience to natural disasters
10. Sustainable financing mechanisms

### Governance

11. National integrated coastal management programmes
12. Environmental and social safeguards in land use planning
13. Marine and coastal protected areas
14. Adaptive coastal management
15. Environmentally sound business practices

## Climate proofing entry points aligned to elements within the MFF initiative

Project Cycle Entry Point	MFF Project Cycle Entry Point	Cycle Stage ID	MFF Elements
Project programming stage	Conceptualisation	1	MFF Overall Strategy
Project identification			MFF National Strategies and PoWs
Preparation, appraisal and approval	Definition, planning Formal Approval	2	MFF Project Guidelines
		3	MFF Climate Proof MFF Quality Assurance Checklist
Monitoring and evaluation	Execution, implementation, monitoring	4	MFF Monitoring and Learning Evaluation (MLE)
	Completion, hand-over, evaluation	5	

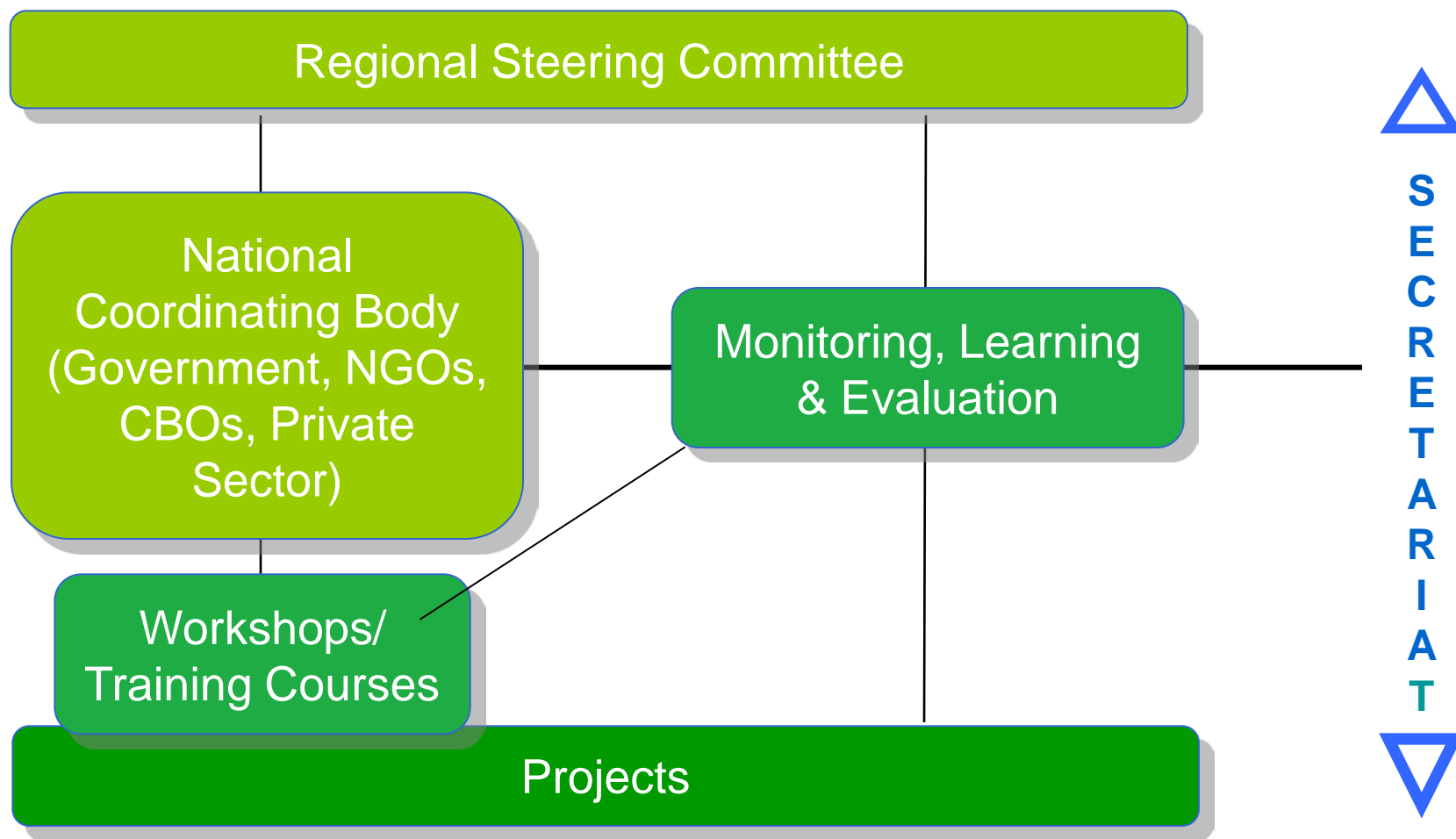
# Climate Proof

## The four step guide helps project managers:

- *Understand climate drivers that cause physical changes in coastal zones;*
- *Identify potential impacts of climate change on achieving project objectives;*
- *Identify appropriate adaptation responses; and*
- *Identify resource requirements to implement adaptation actions*



**MLE:** ensuring that knowledge and learning (i.e., CCA) are shared





[www.mangrovesforthefuture.org](http://www.mangrovesforthefuture.org)



**CC Resilient & Sustainable**



**Vulnerable to CC Impacts & Non - Sustainable**



Norad



Sida