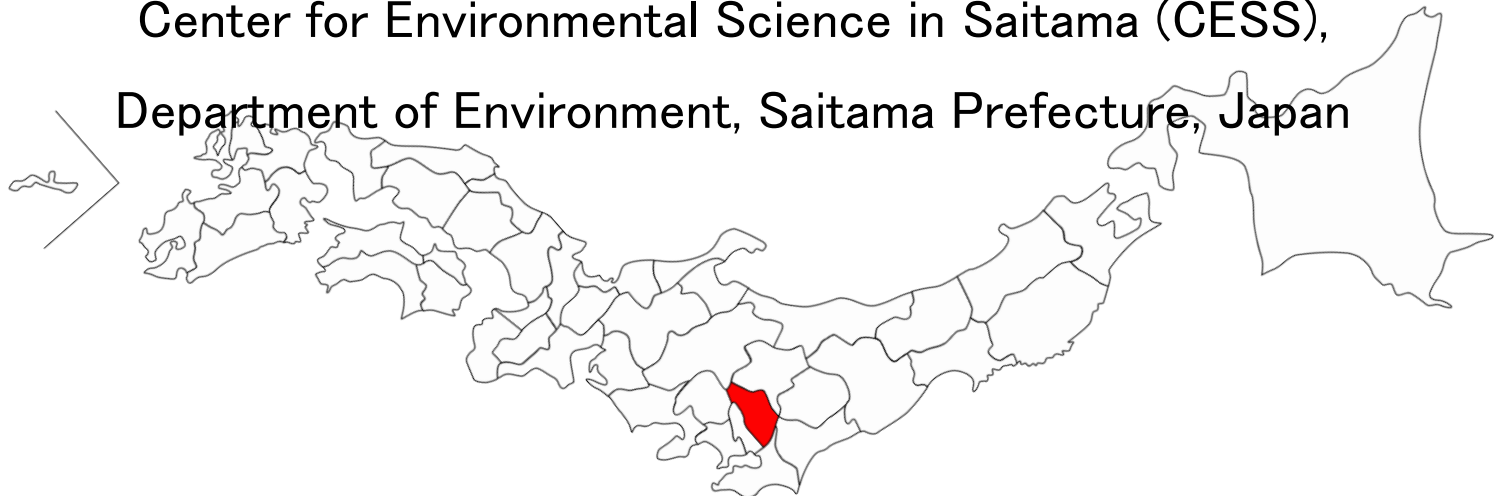


5th Asia Pacific Climate Change Adaptation Forum 2016  
Adapting and Living under 2°C: Bridging Gaps in Policy and Practice  
19 OCTOBER 2016@COLUMBO, SRI LANK

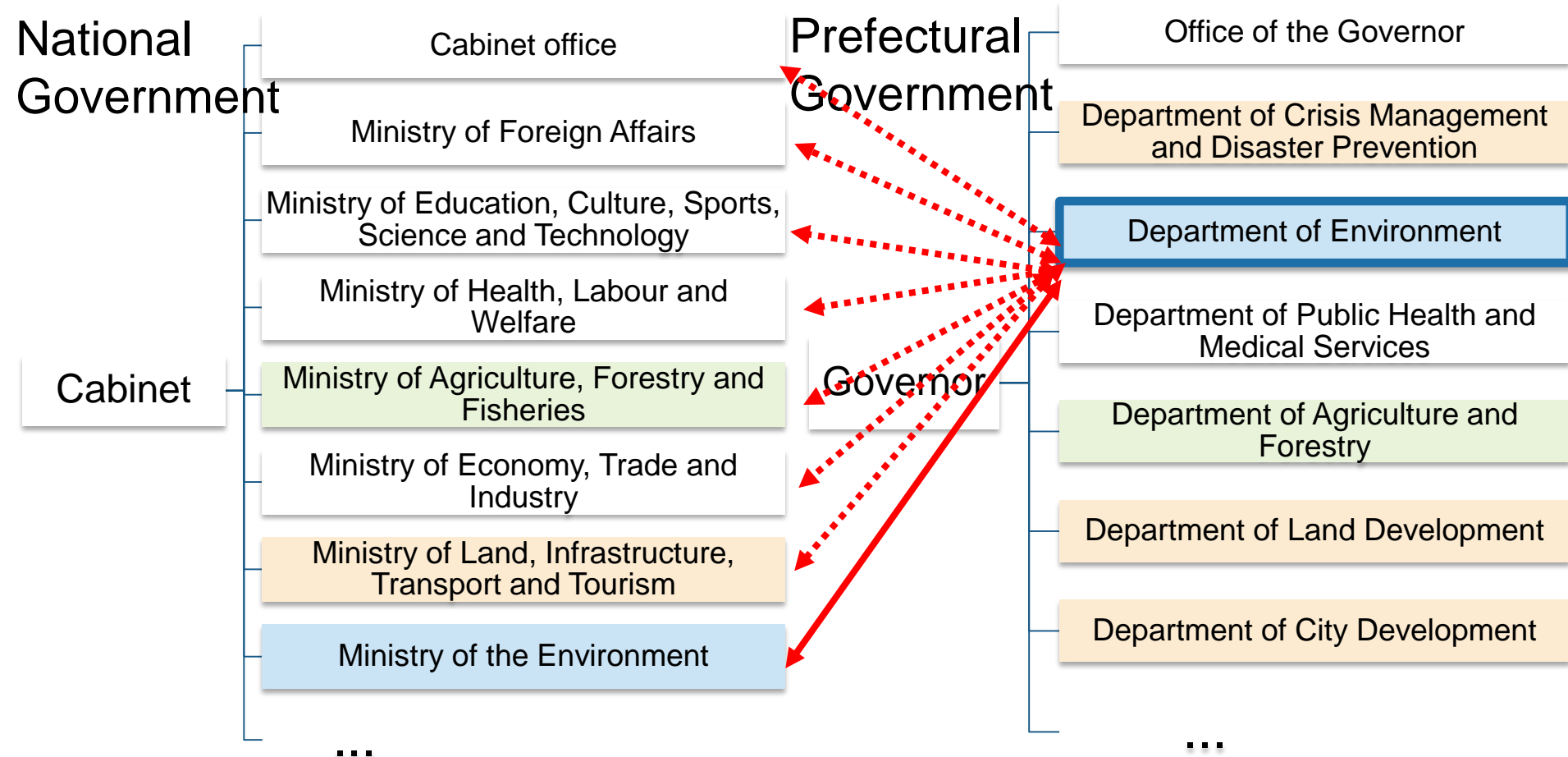
# Vertical integration for adaptation planning: Experience from Saitama Prefecture, Japan

**Masayuki Hara**

Center for Environmental Science in Saitama (CESS),  
Department of Environment, Saitama Prefecture, Japan

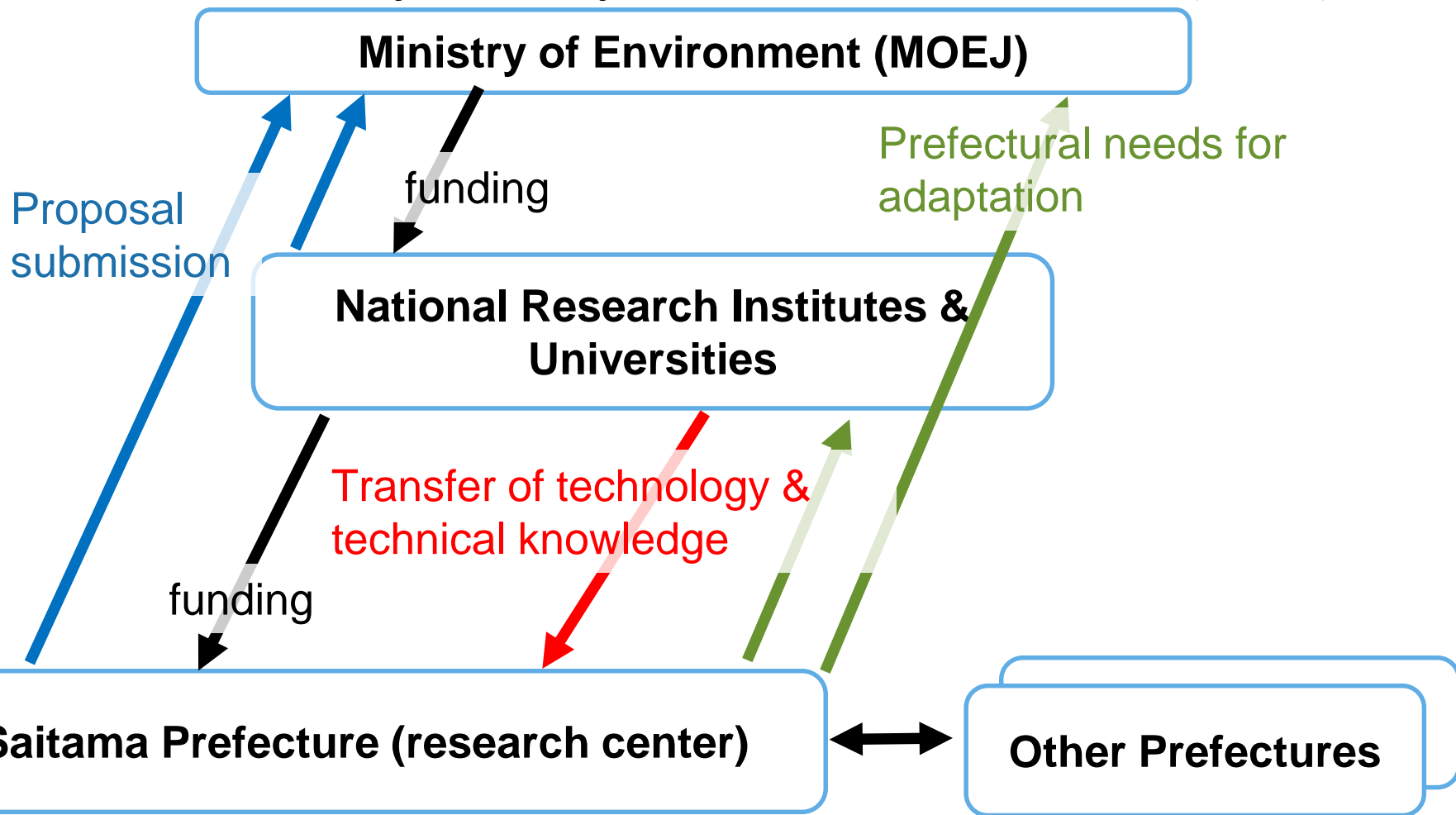


# Vertical Integration promoted through Competitive Research Funding



- Enables national gov. to understand needs of prefectures
- Allows prefecture gov. to access advanced knowledge through participating in huge-scale projects driven by national gov. and national research institutes

# Competitive Research Funding: A Case on Vulnerability & Impact Assessments (VIA)



horizontally integration among prefectures was enhanced through information sharing

# Benefits from Vertical Integration: Knowledge and capacity enhanced

Knowledge and capacity enhanced :

- **Local urban planning** (increase number of buildings, release of heat by car&a.c.) **can affect to local climate**

- **Example: Saitama pref. has experienced over 2.03°C increase in the air temperature in the recent century:**

**1.11°C** by the global warming, **0.92°C** is urbanization



## Features of “Climate Downscaler S8”

- Allows for assessing effects of urban planning & land-use alternation (e.g. deforestation or tree-planting) on local thermal environment
  - Enables understanding on current & future climate conditions at local level, combining the effects of local urban planning
  - Ease of access
- A PC software program; easily run by non-specialist of climate modeling

# Climate Downscaler S8 Training

## 1<sup>st</sup> Training: Feb. 2016 at AIT

26 government officials and researchers working on:

- Climate change vulnerability and impact assessments;
- Adaptation strategy formulation;
- Impact assessments of future urbanization, farmland development on regional climate

80 % improvement in understanding on:

- Global climate models;
- Use of Downscaler;
- Relevance and use of downscaled climate data in their work

## 2nd Training: early 2017 at AIT

For more information:  
Contact at AIT RRC.AP's booth



*Thank you for your attention.*

For more information:

Masayuki Hara, CESS  
(hara.masayuki@pref.saitama.lg.jp)

Hiromi Inagaki-Wagner, AIT RRC.AP  
(hiromi.inagaki@rrcap.ait.asia )