



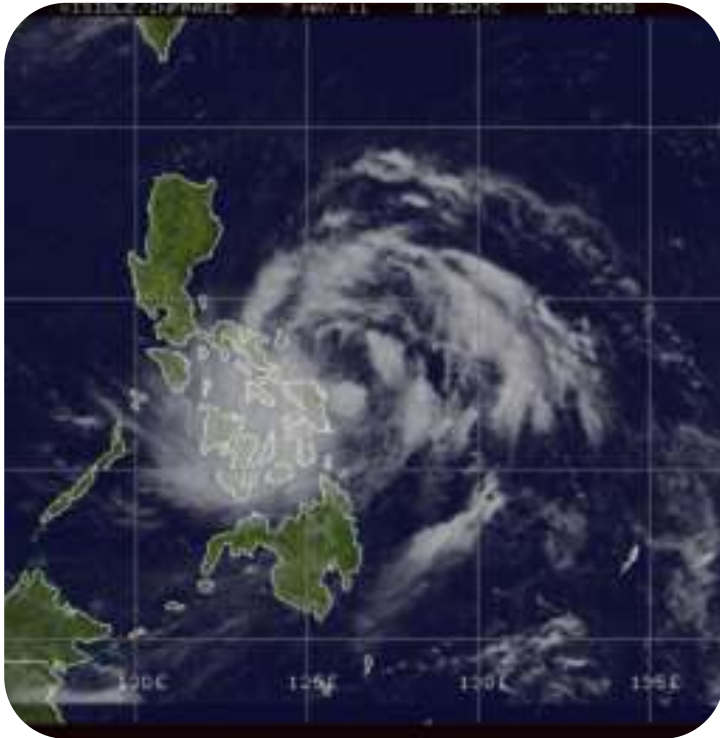
Transformation for Climate-Resilient Pathways: Role of Local Communities

Dr. Juan M. Pulhin

Dean and Professor
College of Forestry and Natural Resources
University of the Philippines Los Baños

Asia-Pacific Climate Change Adaptation Forum
2014, 1-3 October 2014, PWTC, Kuala Lumpur,
Malaysia

- **Communities are at the forefront of climate risks but also the first line of defense against disasters**
- **Important agent of transformation towards climate-resilient pathways for sustainable development**



Typhoons

Image Credit: PAGASA-DOST

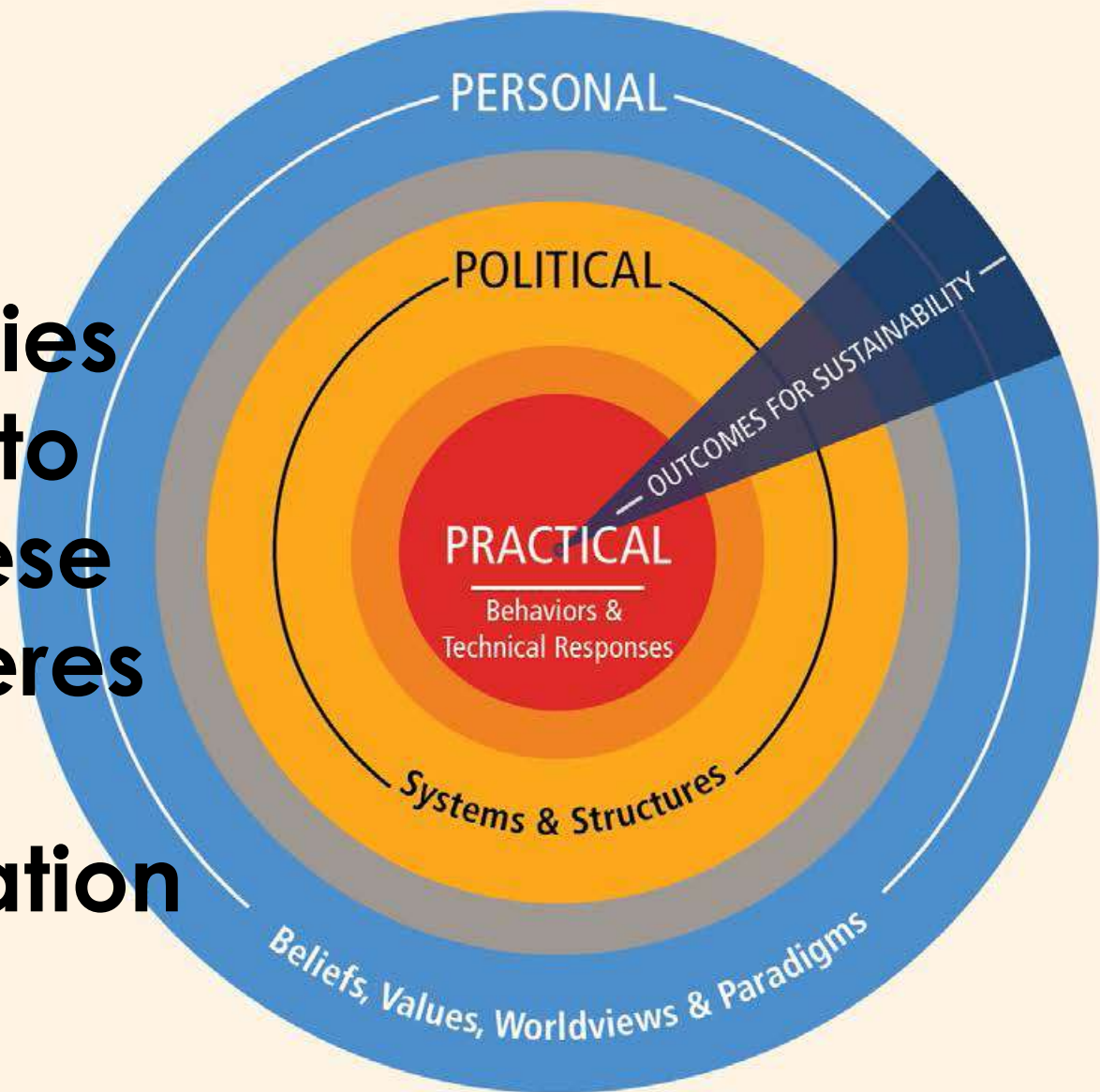


Storm Surges

Image Credit:

www.catalogue.sciencephoto.com

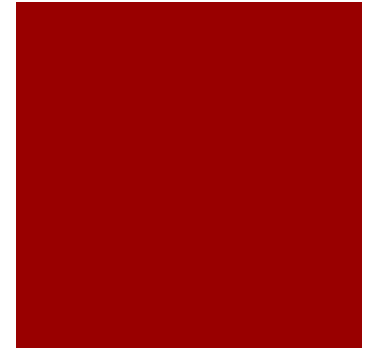
Local communities have role to play in these three spheres of transformation



Three spheres of transformation

(Source: O'Brien and Sygna, 2013)

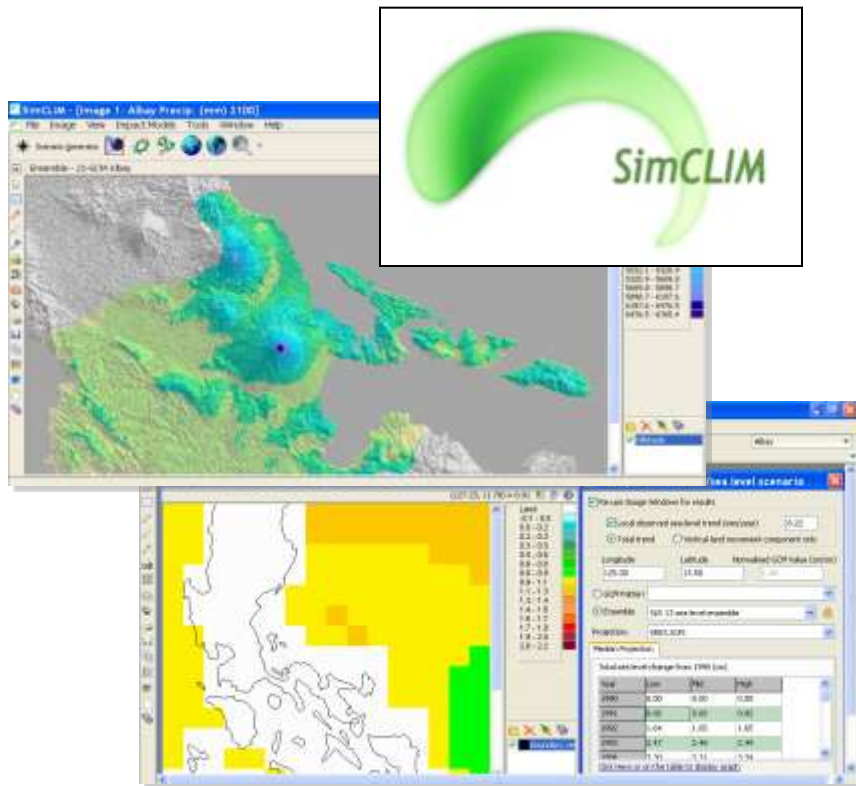
Potential Roles of Local Communities as Agent of Transformation



- Knowledge generation and application through action-research and climate risk monitoring
- Advocacy and alliance building
- Changes in behavior and application of appropriate climate-resilient technologies
- Collective action on environmental protection and management

Integration of Science and Local Knowledge

Computer Modeling System (SimCLIM)



Participatory Methods



APN
CAPaBLE

A farmer-led
network of POs,
NGOs, and
scientists...

...working towards
the sustainable use
& management of
biodiversity...

...through farmers'
control of genetic
and biological
resources,
agricultural
production, etc.



**MASIPAG Farmers'
Resiliency to Climate
Change through alliance
building**



Success

MASIPAG has a network for Seed Exchange/Seed Bank which includes varieties of seeds that can withstand climate change manifestations.



Conservation Farming Village

CFV is a strategy that aims to uplift the lives of vulnerable upland farmers towards poverty eradication, climate change adaptation and environmental security by educating farmers to change destructive farming practices in favor more sustainable technologies.

1) Farm in Davao del Norte



2) Farm in Albay



Outcomes of CFV
(Source: Carandang et al. 2011)

“Bantay Dagat”

Ligao City, Albay

- “Sea patrol”
- Protects remaining mangrove forests
- Performs mangrove reforestation
- Apprehends illegal fishers in the sanctuary



**Collective action through
environmental protection**



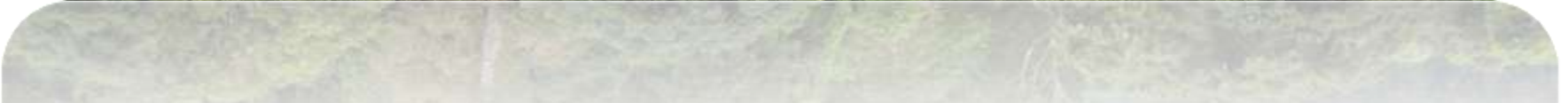
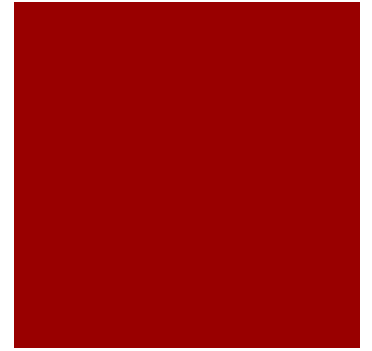
Benefits



- Protection from strong winds and typhoons
- Fisherfolks park and tie their boats in the mangroves during typhoons
- Mangroves help clean the sea by trapping wastes in their branches, such as plastics
- Increase in fish catch

Management of Protected Area

Religious Group in Mt. Banahaw





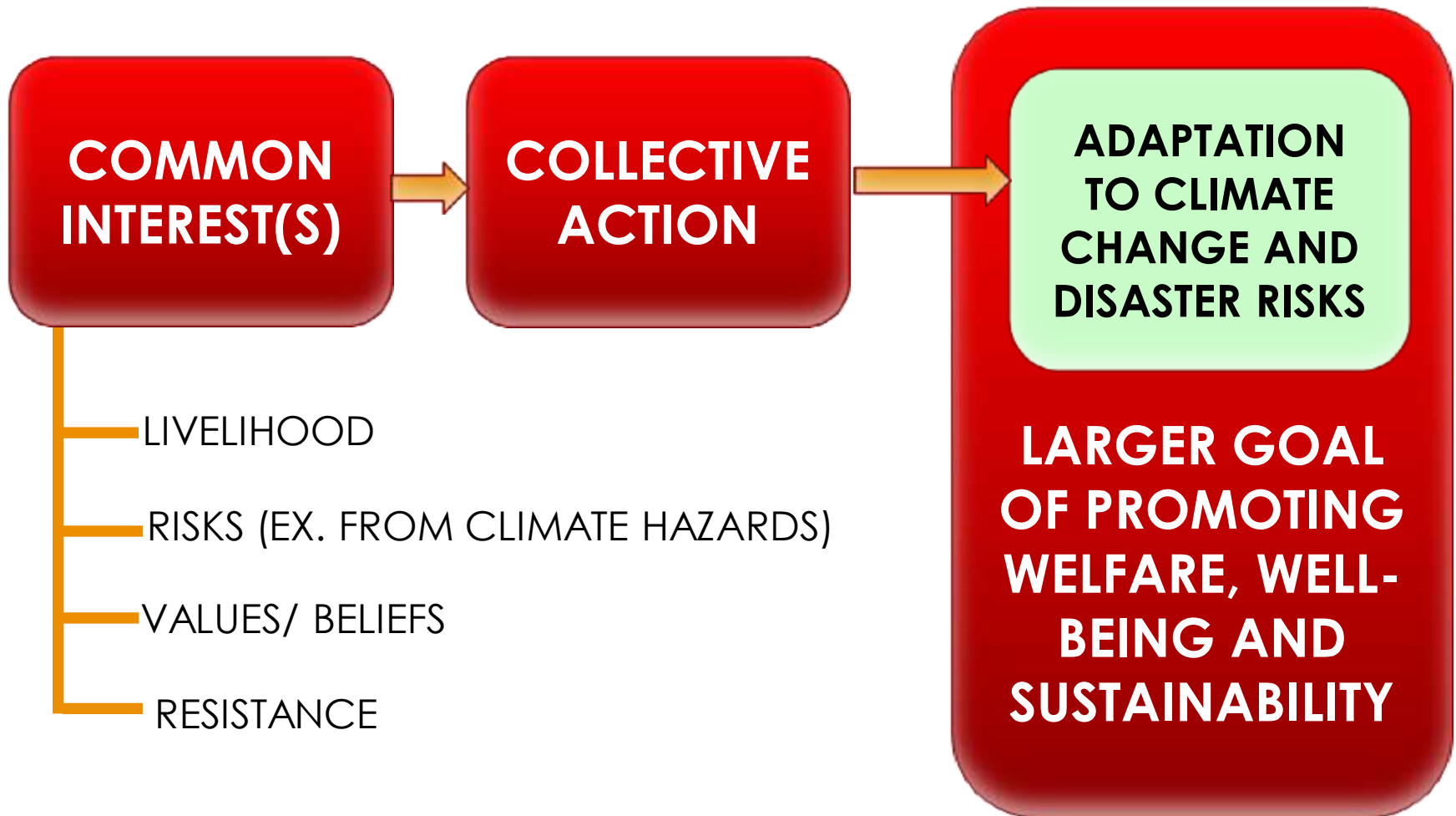
Practices

The religious group has instituted rules and regulations to protect what they consider as the sacred mountain, which include not cutting the trees.

Adherence to the rule comes from loyalty from religious values or beliefs rather than from mere existence of the rule.

Photo Source: Mark Mayo-Magallanes,
<http://republicanegrense.com/2012/04/05/mount-banahaw-experience-history-and-mystery/>

Emerging Lesson on Community-Based Adaptation Strategies that can promote transformative pathway





Thank you very much!