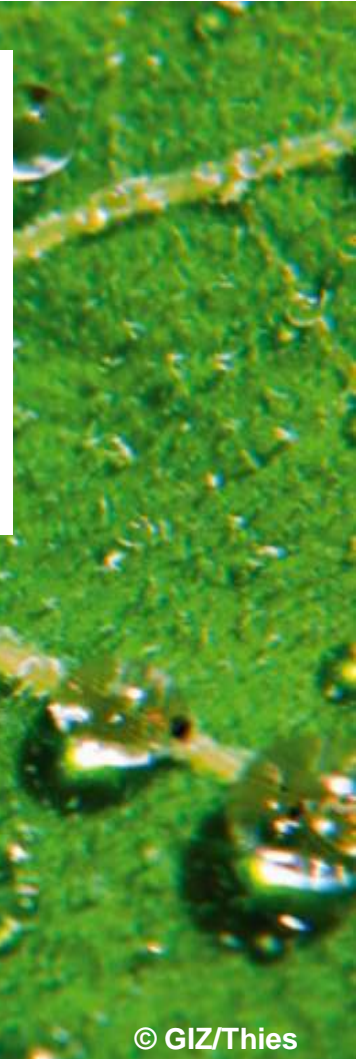




Ecosystem-based Adaptation in the Water Sector

by Roland Treitler





Germany Brandenburg (Source: Matthias Freude, Land Brandenburg)

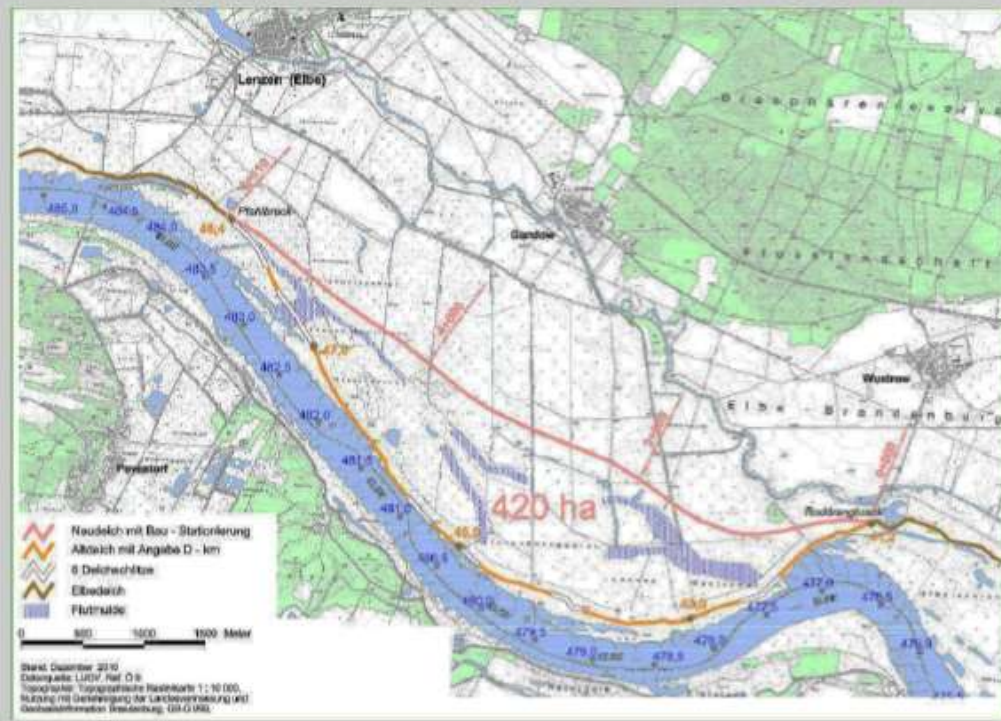


Natural Retention Areas

Dike relocation river Elbe : 420 ha gained foreshore area

Technical Data Dike Relocation:

- Stream Kilometers
476,7 – 483,8
- New Dike Route
6.110 M
- Old Dike Route
7.189
- Max. Relocation
1.300 M
- Dike Crest
8,15 M + Freeboard





Germany Brandenburg (Source: Matthias Freude, Land Brandenburg)

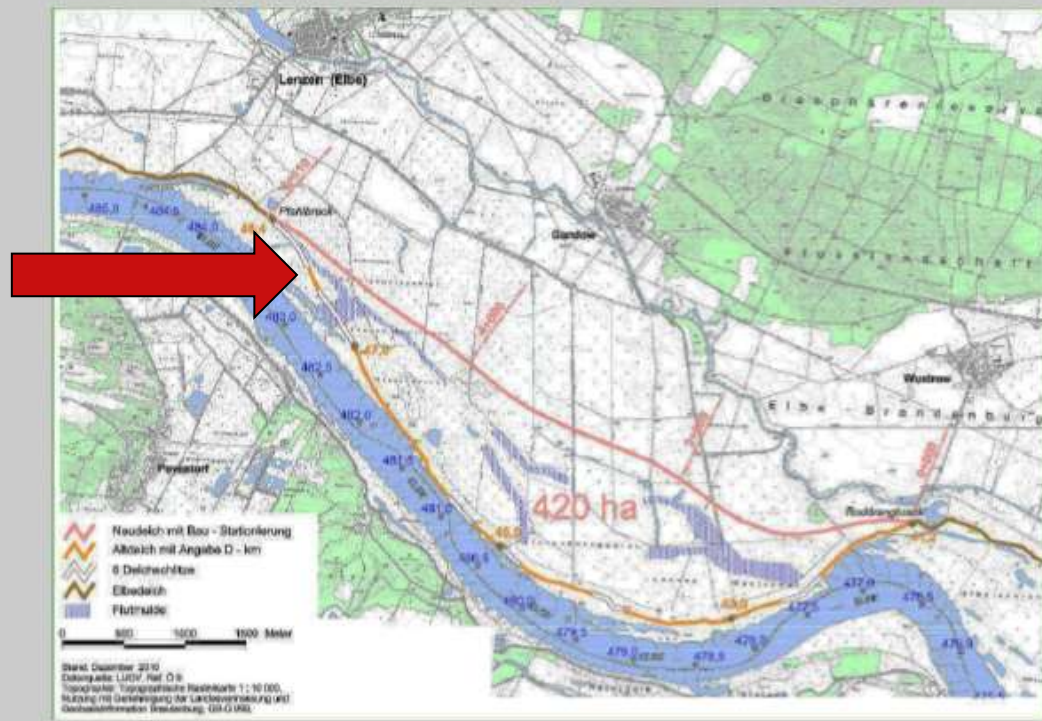


Natural Retention Areas

Dike relocation river Elbe : 420 ha gained foreshore area

Technical Data Dike Relocation:

- Stream Kilometers
476,7 – 483,8
- New Dike Route
6.110 M
- Old Dike Route
7.189
- Max. Relocation
1.300 M
- Dike Crest
8,15 M + Freeboard





Germany Brandenburg (Source: Matthias Freude, Land Brandenburg)

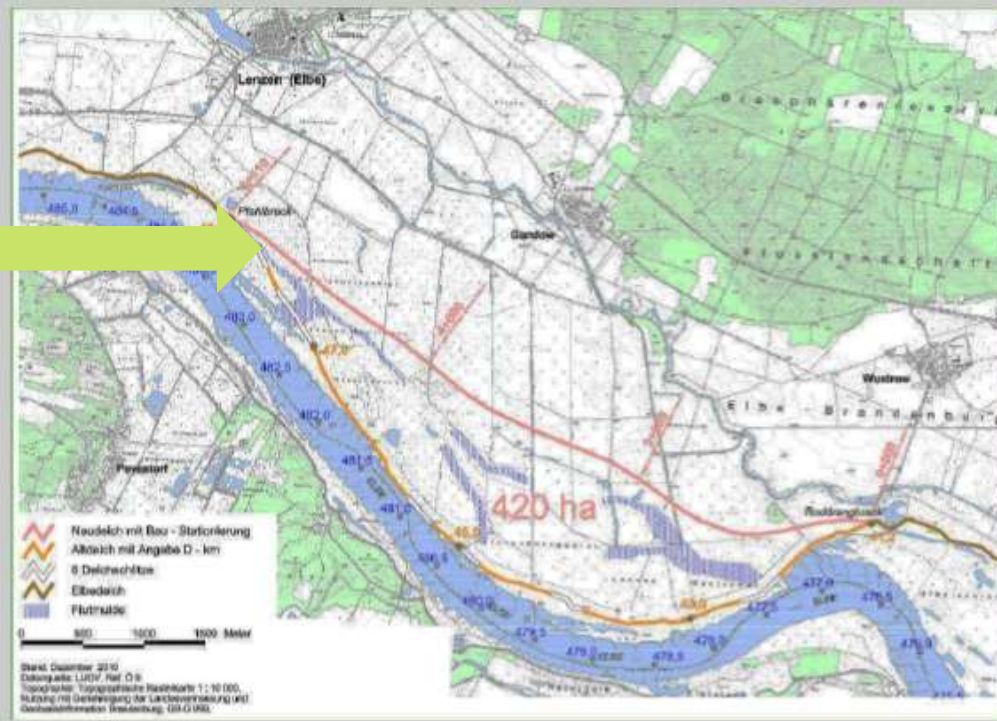


Natural Retention Areas

Dike relocation river Elbe : 420 ha gained foreshore area

Technical Data Dike Relocation:

- Stream Kilometers
476,7 – 483,8
- New Dike Route
6.110 M
- Old Dike Route
7.189
- Max. Relocation
1.300 M
- Dike Crest
8,15 M + Freeboard





Germany Brandenburg (Source: Matthias Freude, Land Brandenburg)



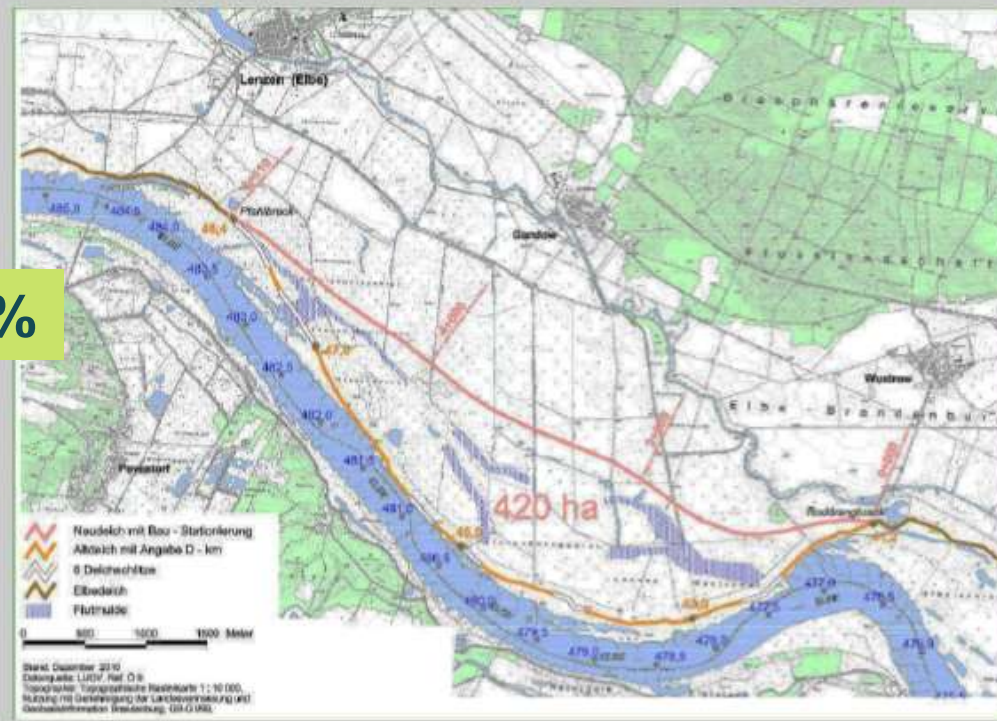
Natural Retention Areas

Dike relocation river Elbe : 420 ha gained foreshore area

Technical Data Dike Relocation:

- Stream Kilometers
476,7 – 483,8
- New Dike Route
6.110 M
- Old Dike Route
7.189
- Max. Relocation
1.300 M
- Dike Crest
8,15 M + Freeboard

-15%





Germany Brandenburg (Source: Matthias Freude, Land Brandenburg)

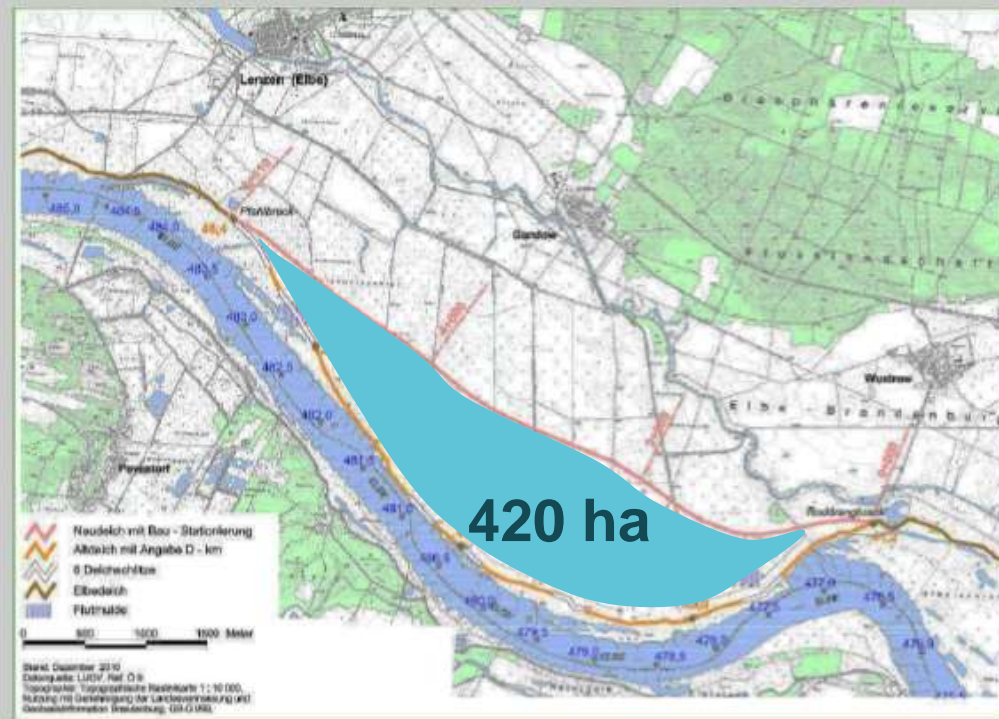


Natural Retention Areas

Dike relocation river Elbe : 420 ha gained foreshore area

Technical Data Dike Relocation:

- Stream Kilometers
476,7 – 483,8
- New Dike Route
6.110 M
- Old Dike Route
7.189
- Max. Relocation
1.300 M
- Dike Crest
8,15 M + Freeboard





Germany Brandenburg (Source: Matthias Freude, Land Brandenburg)



Natural Retention Areas

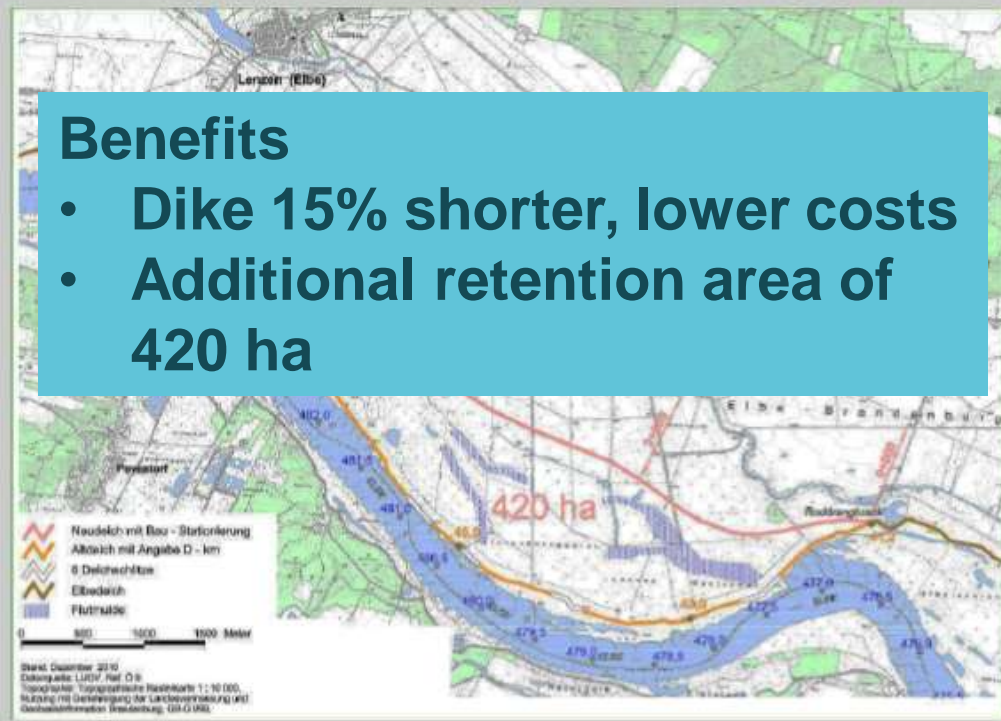
Dike relocation river Elbe : 420 ha gained foreshore area

Technical Data Dike Relocation:

- Stream Kilometers
476,7 – 483,8
- New Dike Route
6.110 M
- Old Dike Route
7.189
- Max. Relocation
1.300 M
- Dike Crest
8,15 M + Freeboard

Benefits

- **Dike 15% shorter, lower costs**
- **Additional retention area of 420 ha**





Germany Brandenburg (Source: Matthias Freude, Land Brandenburg)



Additional benefit: near recreation area

"Cyclists on our dikes, never!" (1995)

In 2014 the Elbe Cycle Route is the most popular cycle route in Germany for the 10th time in a row.

The Elbe Cycle Route was 2013's busiest cycle route

Cyclist survey of *Naturwacht* July 2006: 150 cyclists per day
Overnight per day and head € 35.00;
RDA per head 25 € -> € 60 per day
€ 508.500 monthly income of the region



Living weirs in Thailand

- How to overcome institutional, financial limits
 - Look for visionary persons





Living weirs in Thailand

- Create a platform for collaboration
 - Individual knowledge, local wisdom
 - Science





Living weirs in Thailand

- Create a platform for collaboration
 - Civil society will be encouraged to take action
 - More and more stakeholders will get involved





- The effects are
 - The science is interested and is researching on living weirs
 - The civil society actively participates
 - The governmental institution got involved, too

Thank you for your attention