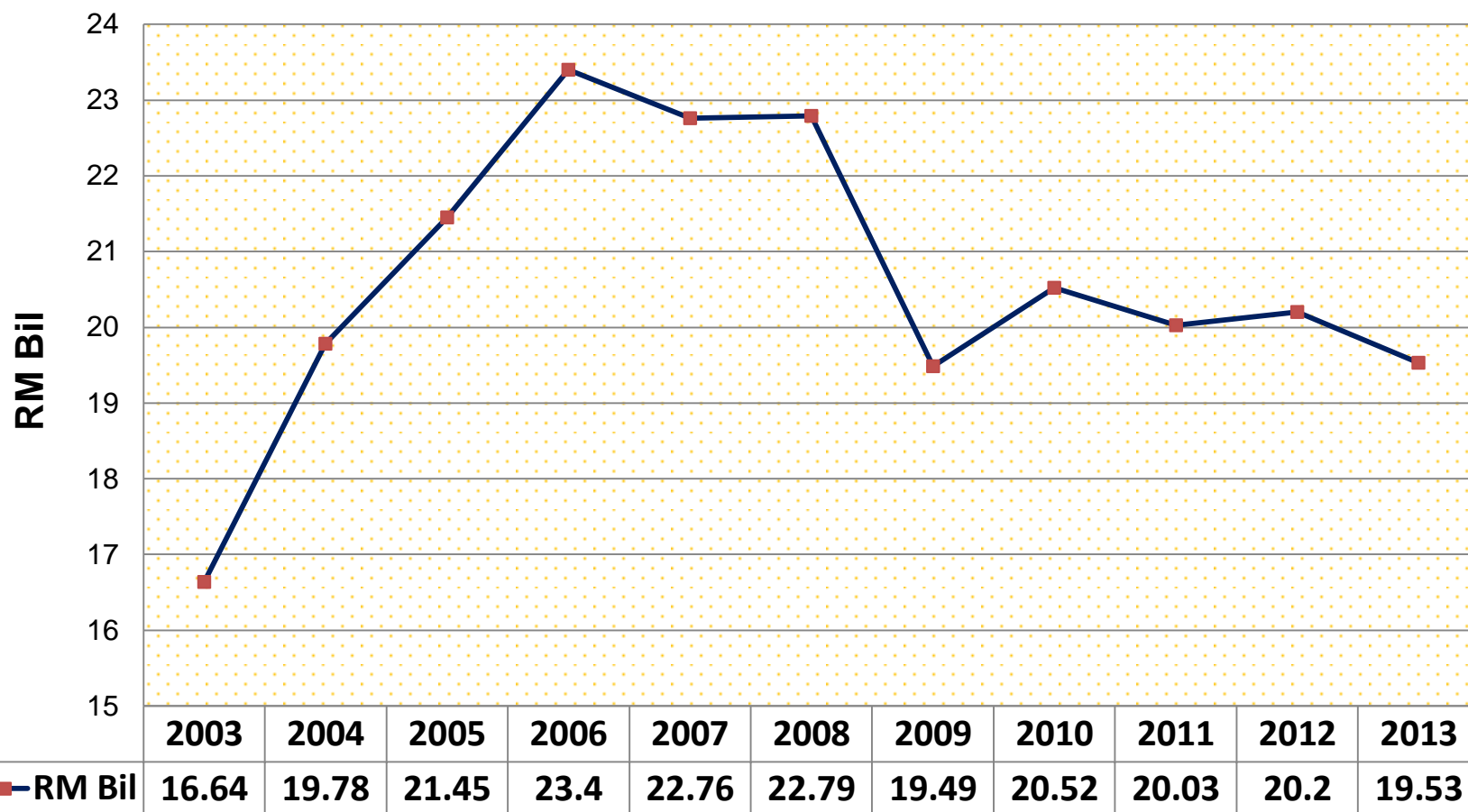




Viewpoint on the
Role of Commodity Custodians
The Case of Timber as a Driver in
Transformation for Alternate Development
Pathways

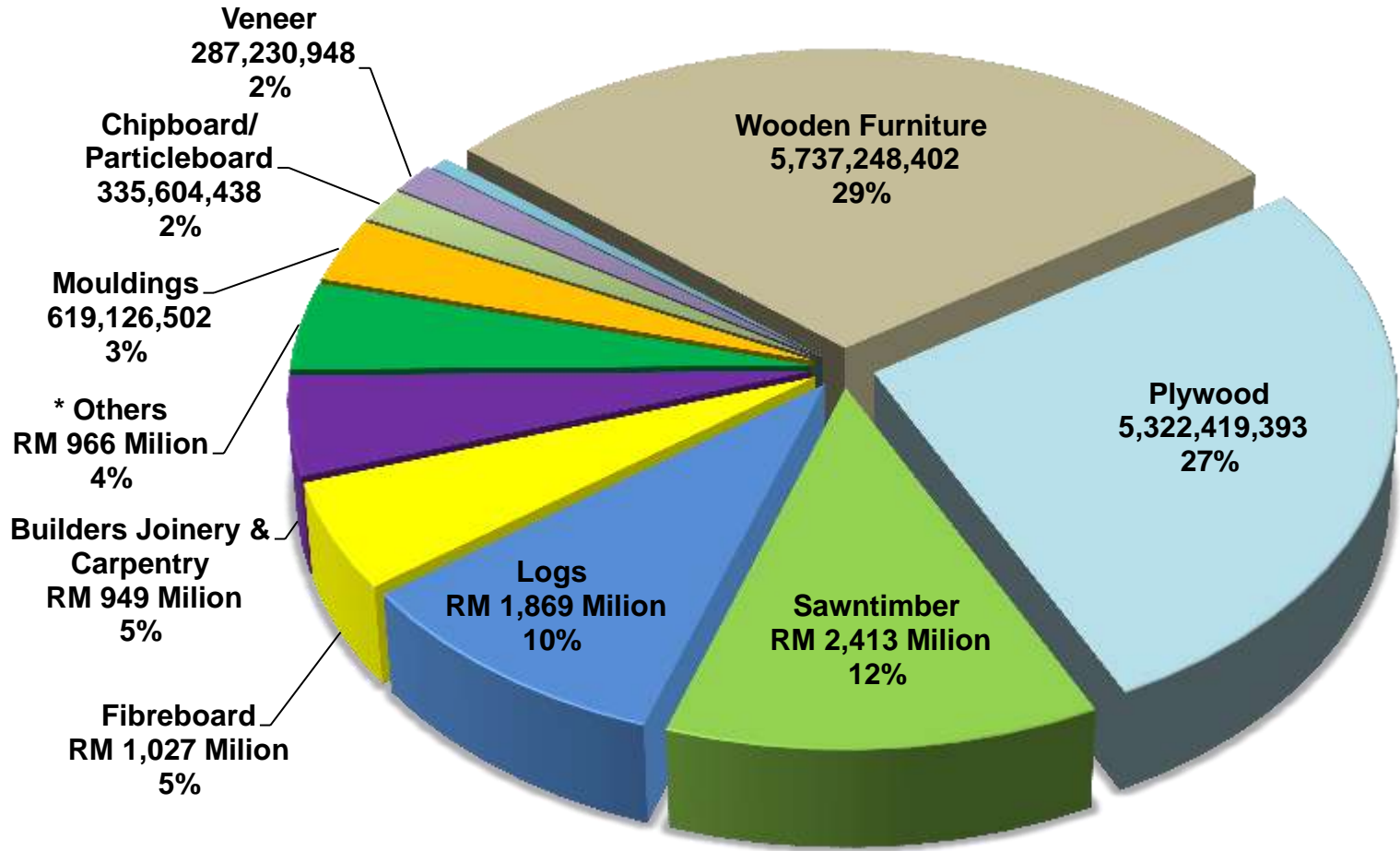
Dr. Jalaluddin Harun
Director General

Malaysian Timber Industry Board (MTIB)



Source : MTIB, DOSM

MALAYSIA : EXPORT OF TIMBER & TIMBER PRODUCTS BY MAJOR PRODUCTS, 2013

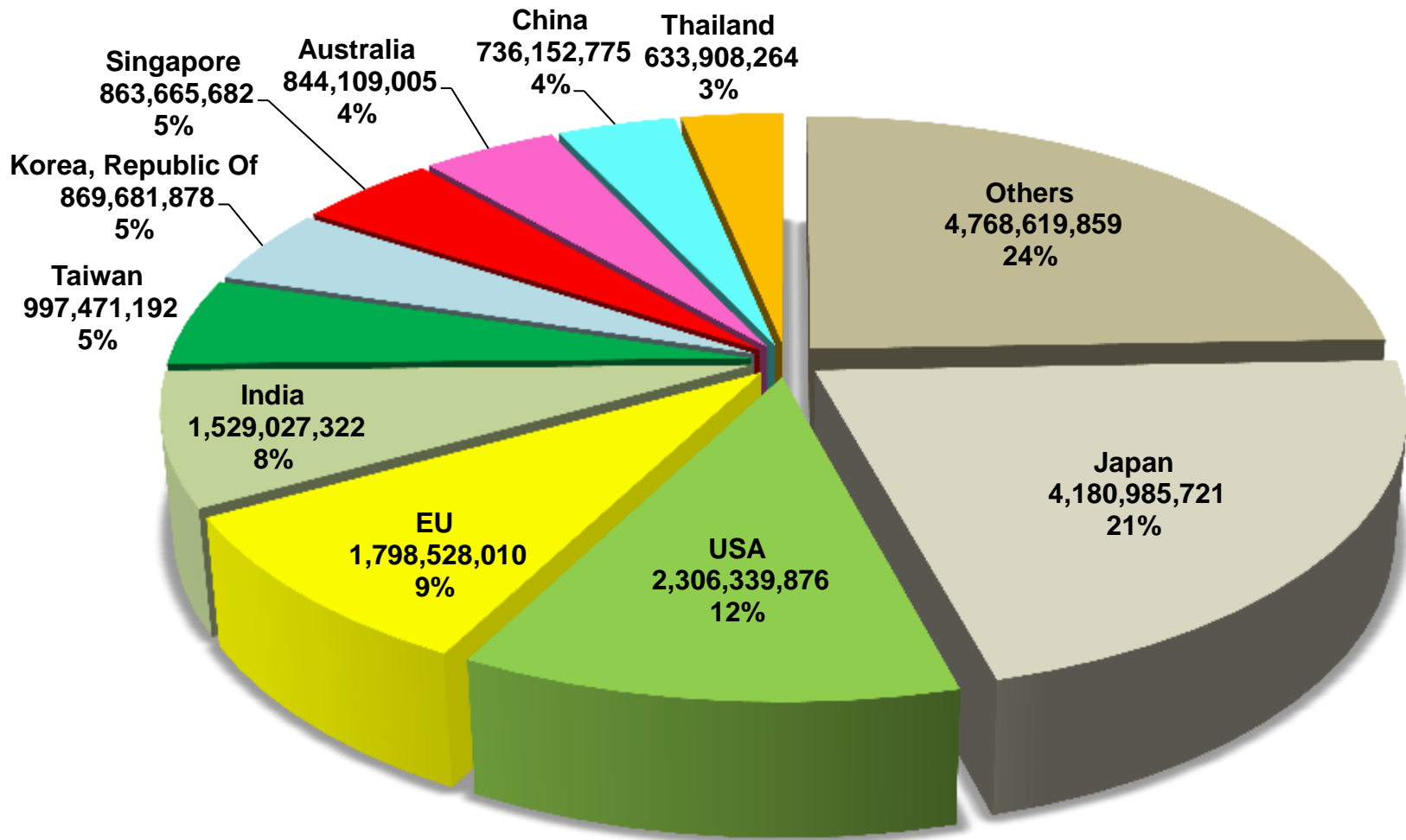


* 19 Products

TOTAL : RM 19.53 Billion

Source : MTIB, DOSM

MALAYSIA : EXPORT OF TIMBER & TIMBER PRODUCTS BY DESTINATION, 2013

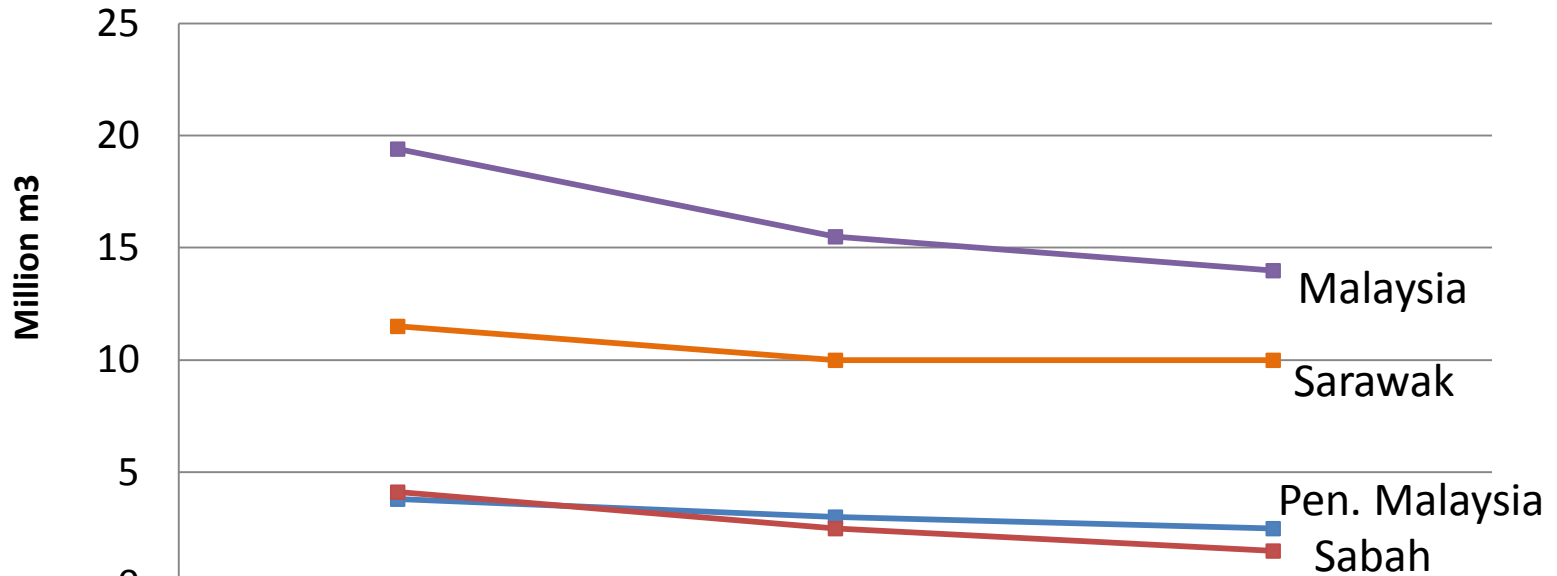


*155 Countries

TOTAL : RM 19.53 Billion

Source : MTIB, DOSM

MALAYSIA- PROJECTED AVERAGE ANNUAL LOG PRODUCTION FROM NATURAL FOREST, 2006-2020

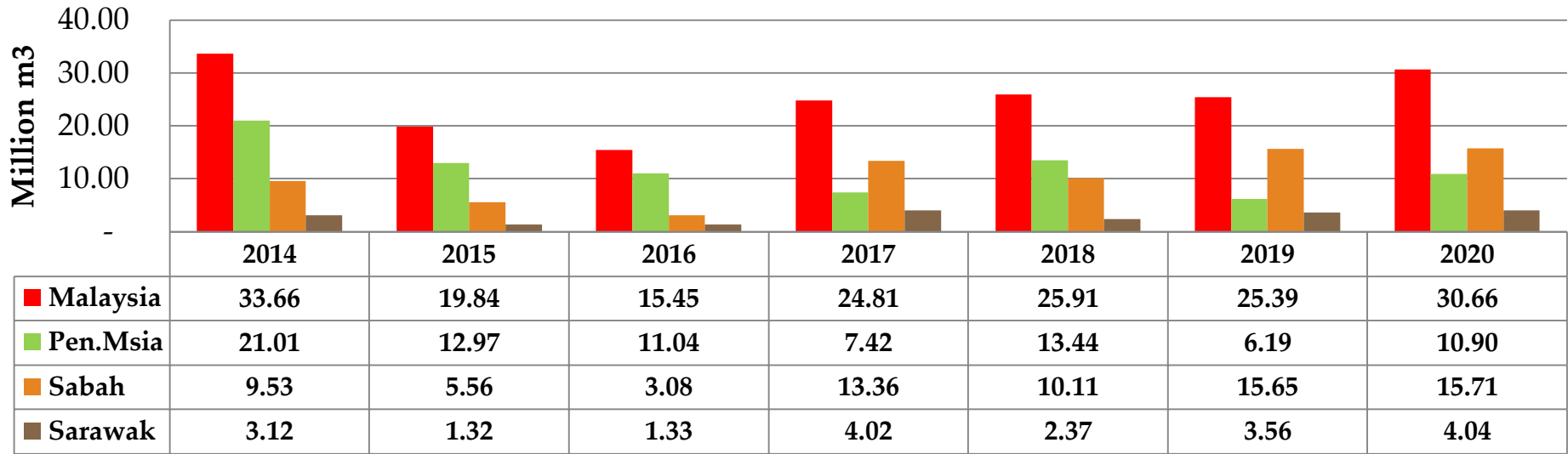


	2006-2010	2011-2015	2016-2020
—■— PENINSULAR MALAYSIA	3.8	3	2.5
—■— SABAH	4.1	2.5	1.5
—■— SARAWAK	11.5	10	10
—■— MALAYSIA	19.4	15.5	14

Commodity Plantation, 1980-2014:-

PLANTATION	Ha
Forest plantation	582,000
MTIB plantation	112,450
Total	694,450
Rubber plantation	1.2 Mllion
Oil palm plantation	5.3 Million
SUB TOTAL	7.2 Million

Availability of Oil Palm Trunk in Malaysia 2014-2020



Note: 136 palm trees/ha and 1.76 cubic meter per tree

Source: MPOB

Logs production

- ~ 20.7 mill m3/yr

Forest and wood residues

- ~ 10 mill. m3/yr

Rubberwood

- 2.1 mill m3/yr

Residues from agriculture

- Oil Palm biomass - 30 million tonne / year (stem, EFB, frond)
- Coconut stems - 3,200 tonnes / year
- Rice husk/ straw - 500,000 tonnes / year
- Bagasse - 180000 tonnes / year
- Bamboo - 10 million culms / year

**THE WAY
FORWARD**

Product development

Continued R&D on alternative material and innovative product to adapt any timber material shortage.

Mainstreaming climate change adaption options into planning and development of timber industry

Enhance productivity and competitiveness

Encourage sustainable living.

Collaboration between the industry and training institutions

THANK YOU

