



# Understanding the Implications of Expanding Coastal Tourism



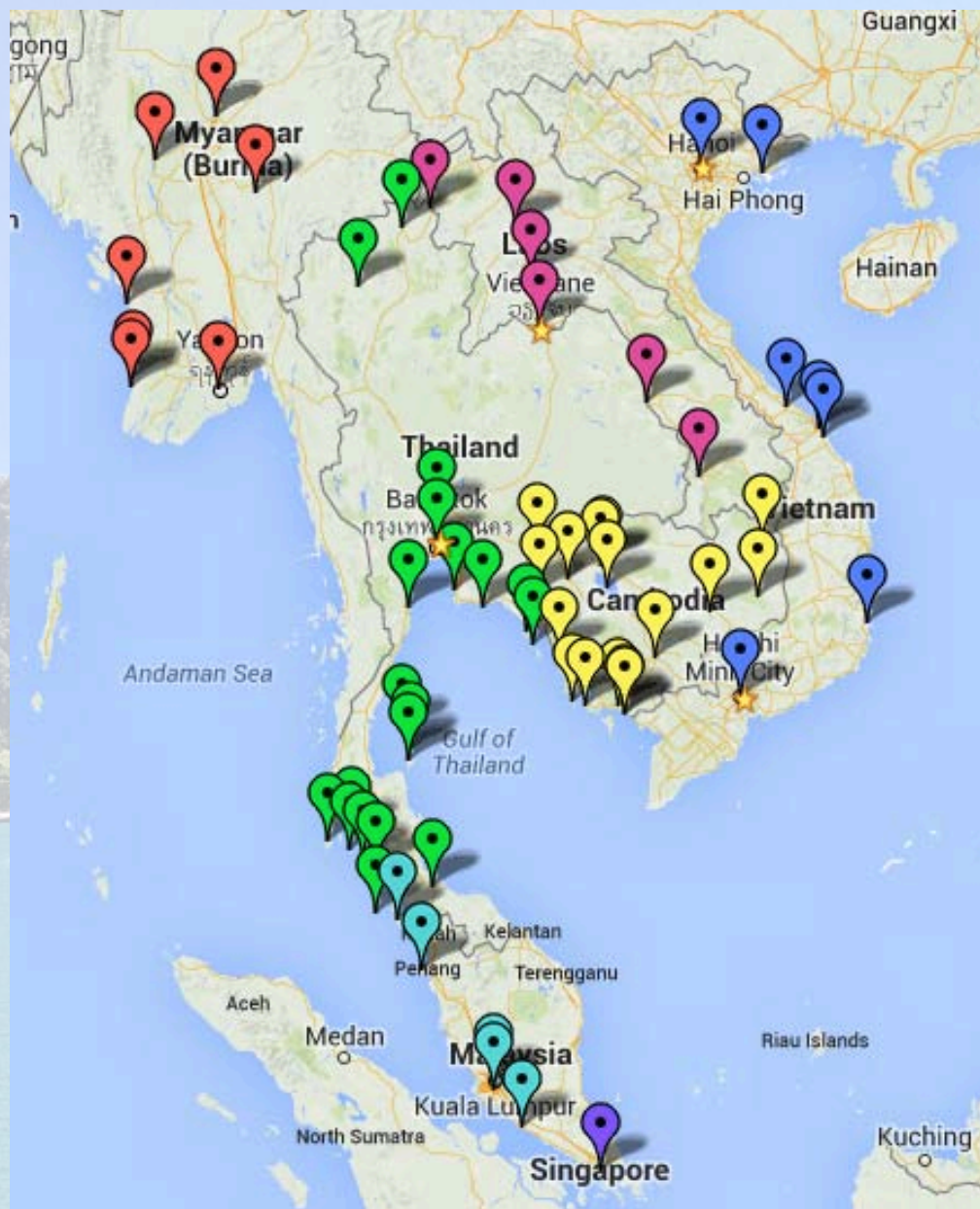
Justin W. Henderoth

Institute for Social and Environmental Transition

Mekong-Building Climate Resilience in Asian Cities (M-BRACE)

Asia-Pacific Climate Change Adaptation Forum | 2 October 2014





**USAID | ASIA**  
FROM THE AMERICAN PEOPLE



**ISET**

**TEI** THAILAND  
ENVIRONMENT  
INSTITUTE



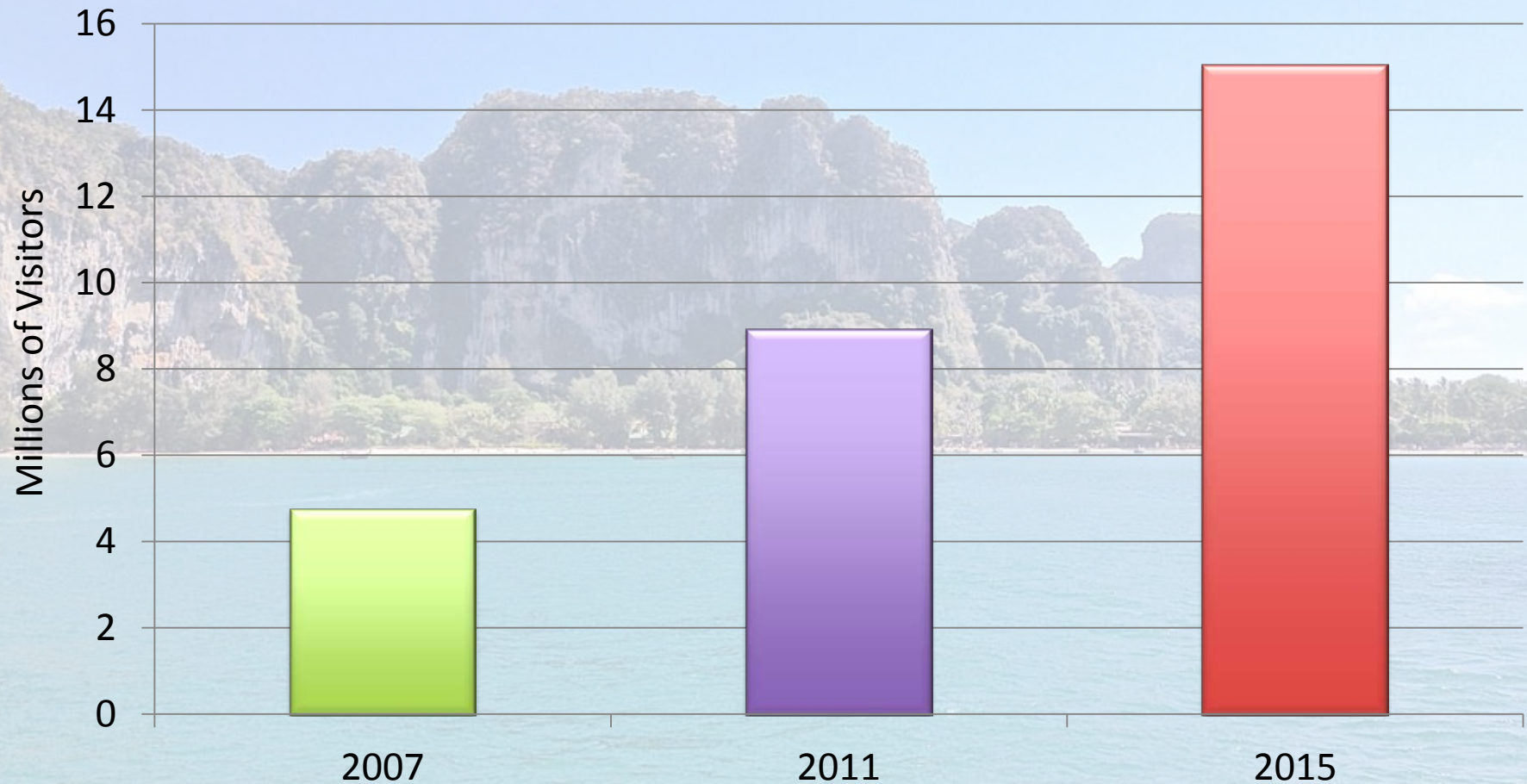
# Phuket



PHUKET

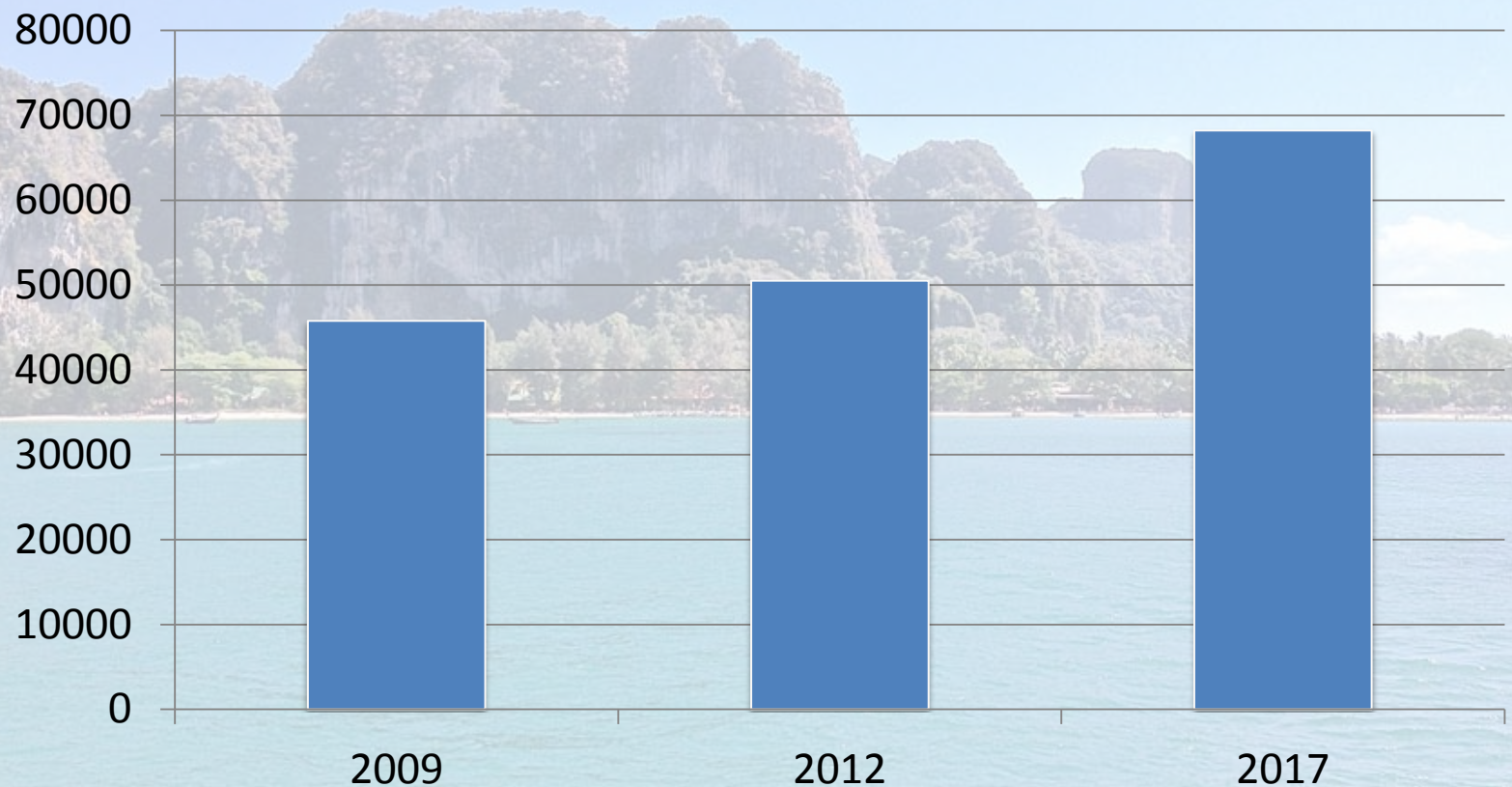
ภูเก็ต

# Tourism Growth in Phuket



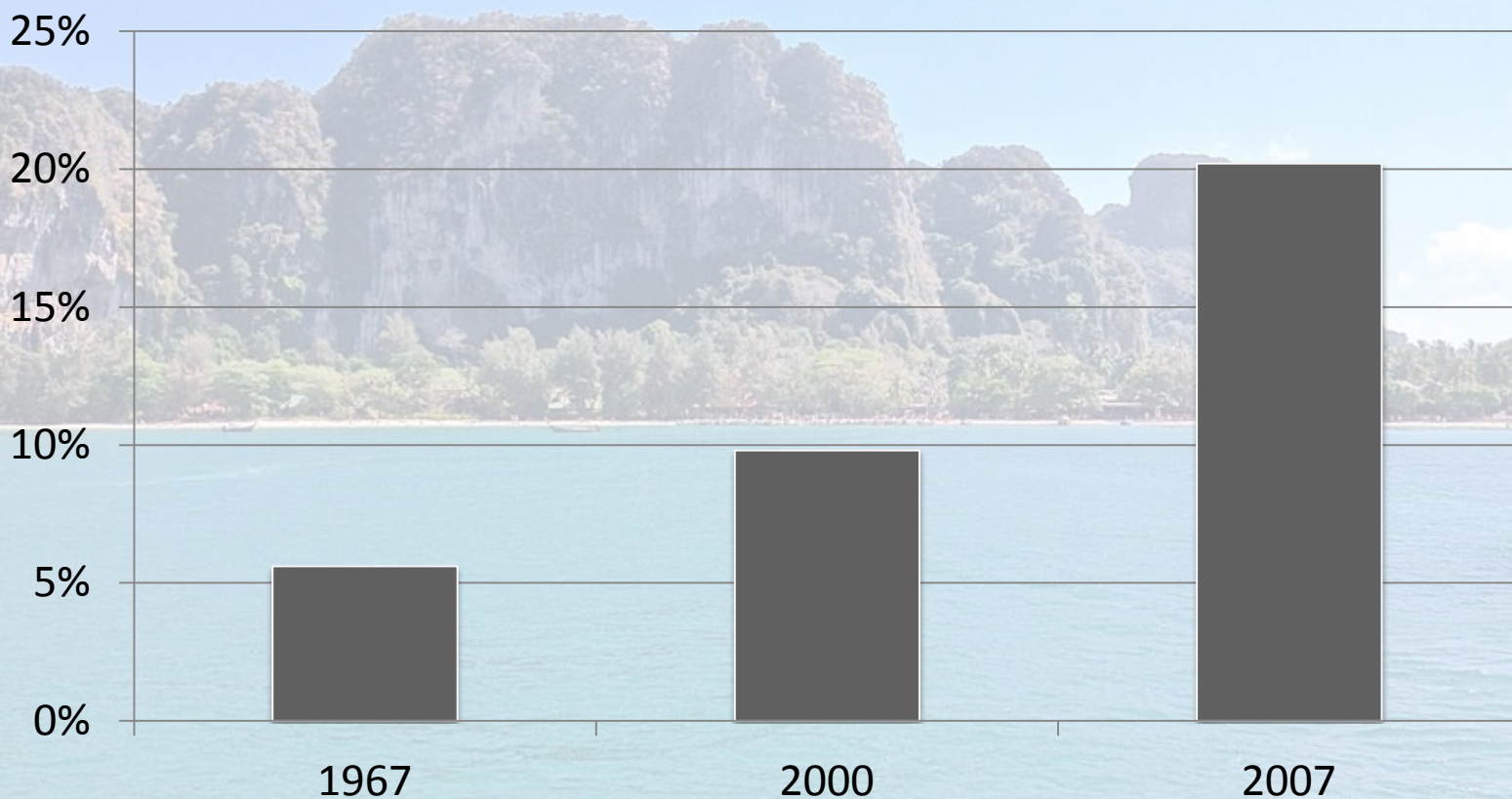


# Increase in Number of Hotel Rooms



# Growth of the Built Land (or Urban Area)

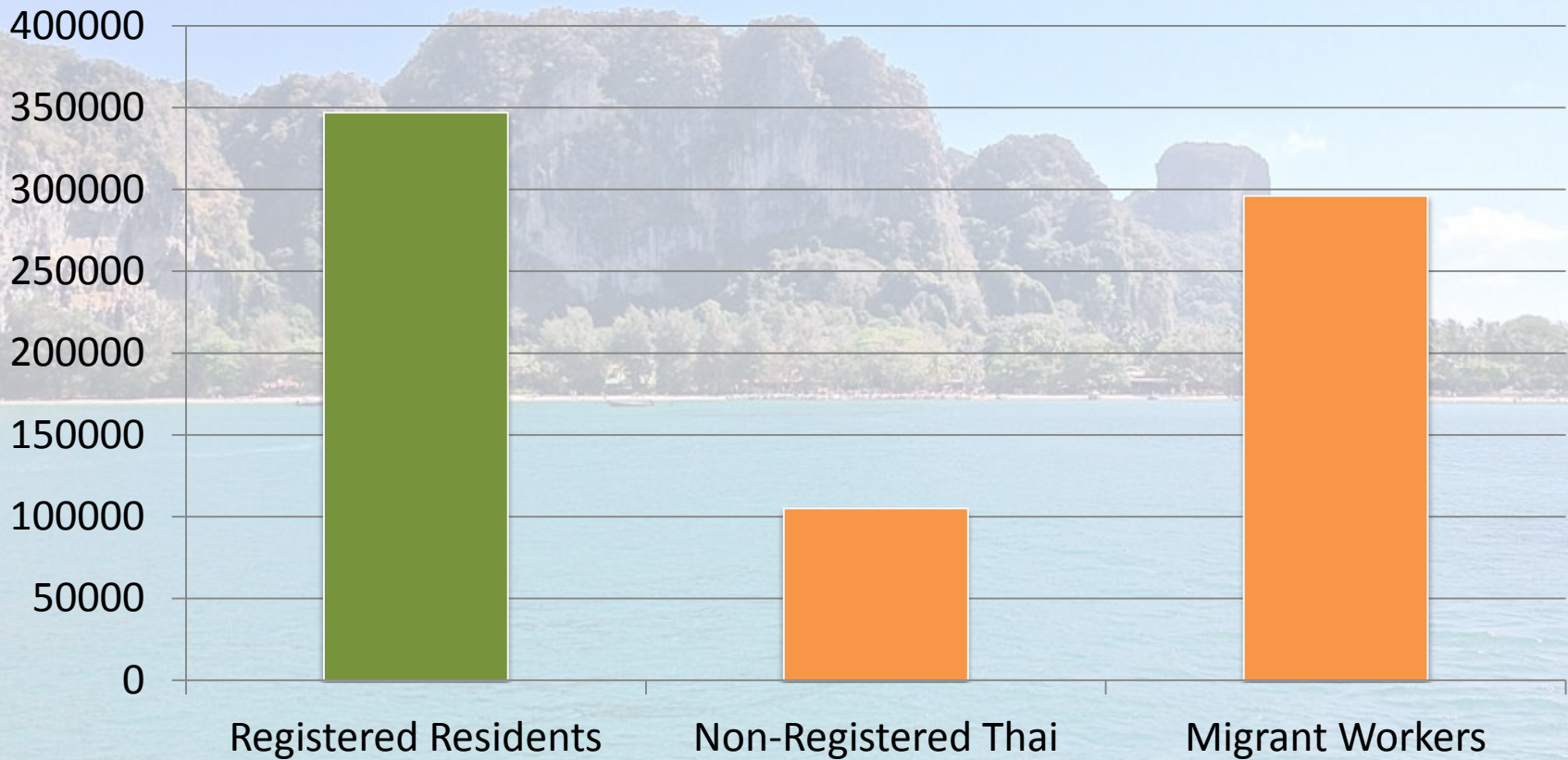
## Urbanized Area





# Population Growth

## Population



# New Infrastructure and New Demands on Existing Infrastructure







The development associated with growing  
tourism in Phuket has led to increased  
**URBANIZATION**



- Population Growth





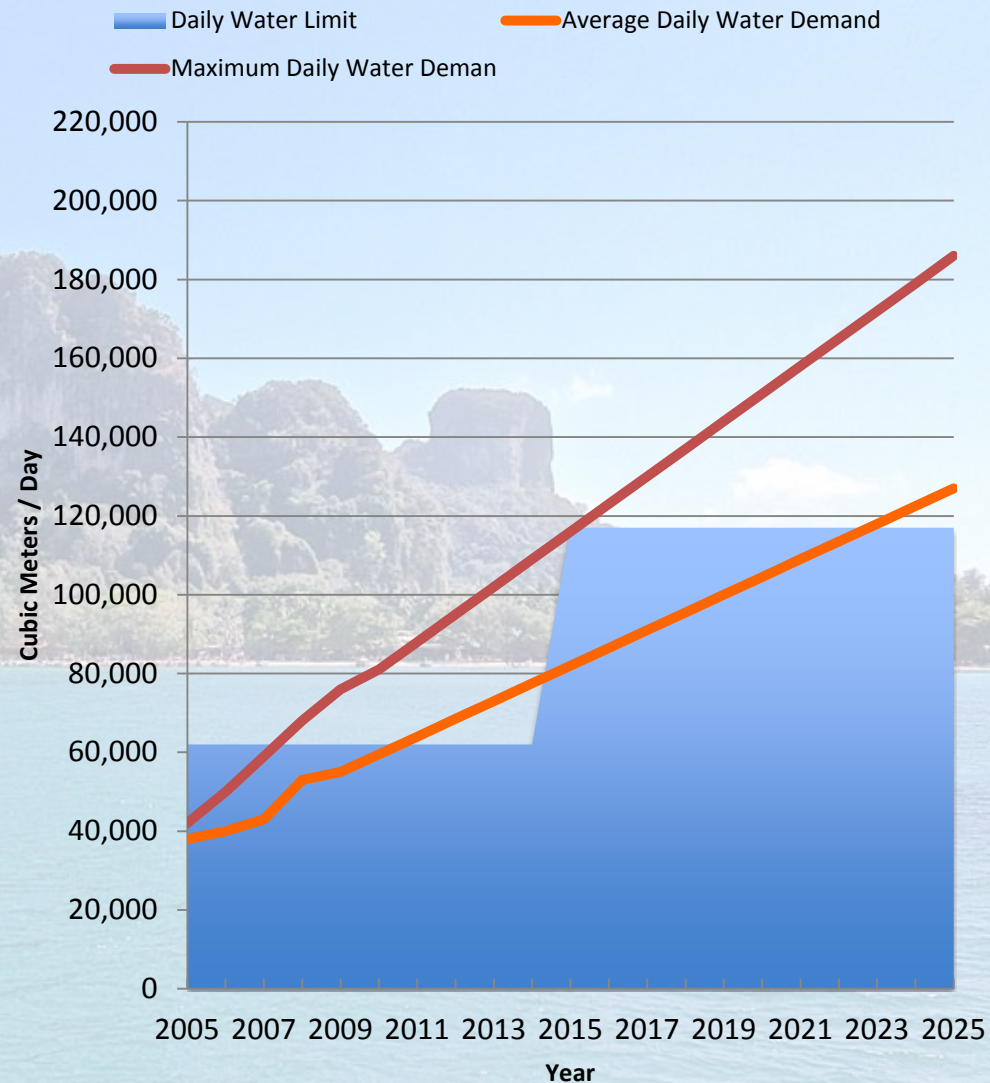
- Population Growth
- Growth of Urban Area





## Water Use on Phuket Island

- Population Growth
- Growth of Urban Area
- Reliance on Systems





# Urbanization and Climate Change

- Population Growth
- Growth of Urban Area
- Reliance on Systems
- More People at Risk
- More Flooding, More homes, buildings, etc. at risk
- More challenges for managing key systems

# Approach to Understanding Vulnerability in Coastal Tourist Areas

Development for tourism (or urbanization) is  
creating new risks and vulnerabilities

Climate change will exacerbate those risks and  
vulnerabilities



# Approach to Understanding Vulnerability in Coastal Tourist Areas

Development for tourism (or urbanization) is  
creating new risks and vulnerabilities

Climate change will exacerbate those risks and  
vulnerabilities



# Supporting Resilient Development

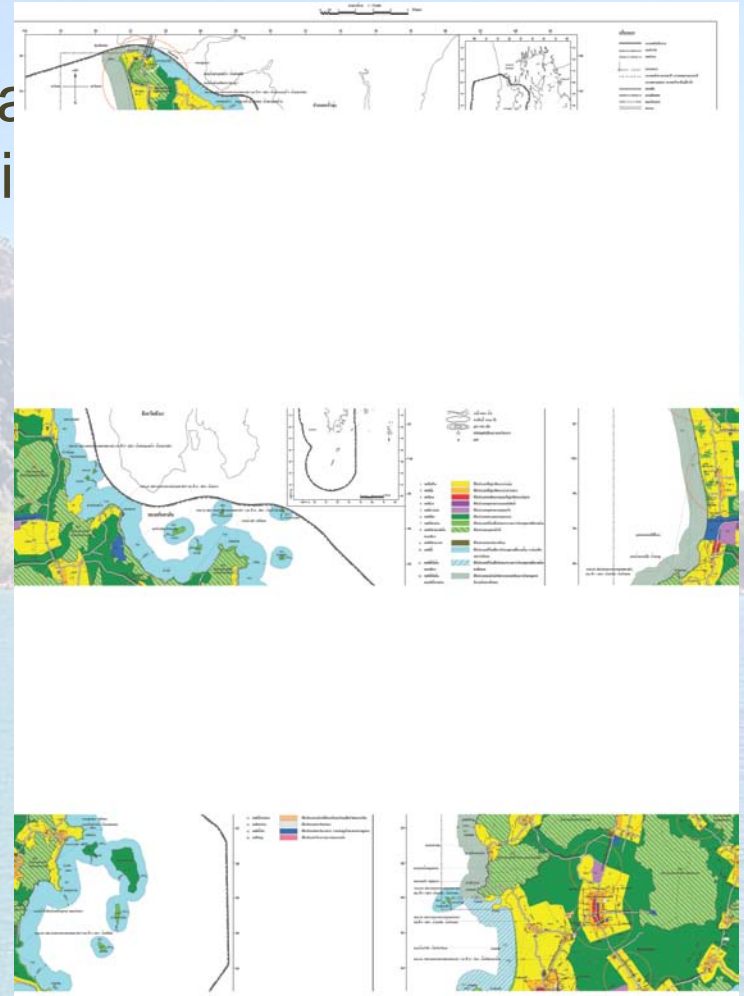
- Ensuring that all stakeholders have a role in shaping development visions



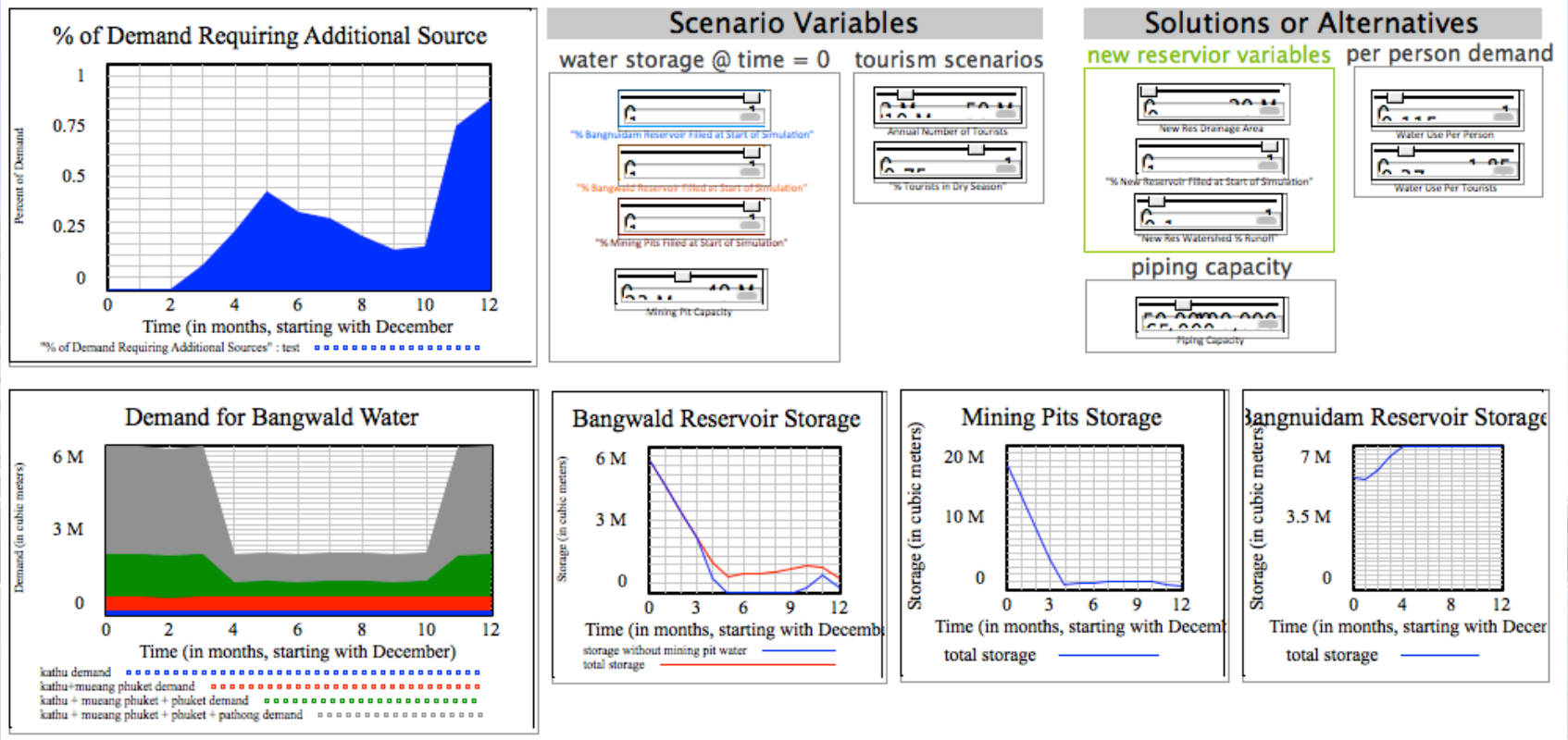


# Supporting Resilient Development

- Ensuring that all stakeholders have a role in shaping development vision
- Supporting and strengthening planning processes



# Supporting Resilient Development



- Coordinating and integrating management of key urban systems



# Supporting Resilient Development

- Ensuring that all stakeholders have role in shaping development visions
- Supporting and strengthening planning processes
- Coordinating and integrating management of key urban systems
- Promoting data collection, better access to data, and its use



# Approach to Understanding Vulnerability in Coastal Tourist Areas

IF

Development for tourism (or urbanization) is  
creating new risks and vulnerabilities

AND

Climate change will exacerbate those risks and  
vulnerabilities

THEN

Efforts to guide, manage, and control development  
processes can address the risks arising from  
development (urbanization) and climate change



# THANK YOU



**USAID** | **ASIA**  
FROM THE AMERICAN PEOPLE

