

Role of RAN API in Mainstreaming Climate Change into National Development Planning

Tri Dewi Virgiyanti

**Deputy Director For Environmental Pollution And Degradation Control
Ministry of National Development Planning (BAPPENAS)**

**Adaptation Climate Change Forum
Kualalumpur, 2 October 2014**

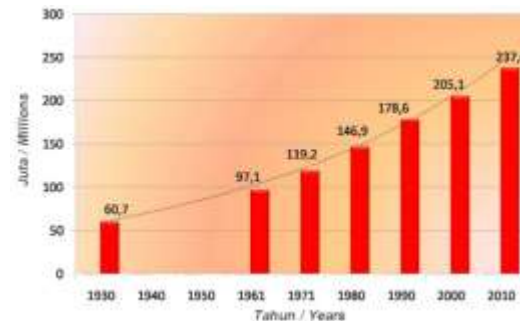
Presentation Outline

- Indonesia Commitment to Address Climate Change Issue
- Role of National Action Plan on Climate Change Adaptation (RAN API) in Development Planning
- Next Steps

INDONESIA COMMITMENT TO ADDRESS CLIMATE CHANGE ISSUE

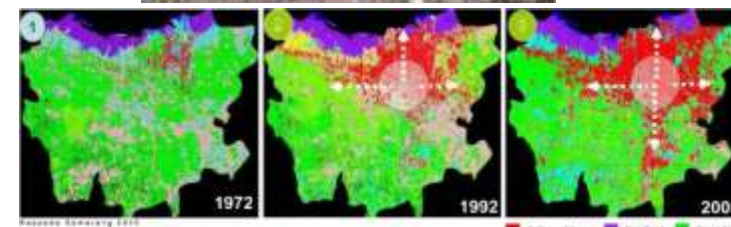
Geographic and Socio-economic Characteristics of Indonesia Place the Country in A Vulnerable Position to Climate Change Impact

- ❑ Archipelagic country with mountainous profile and long coastline
- ❑ Monsoon that affecting annual rainfall trend
- ❑ Located in equatorial line and has a tropical climate



- ❑ High population number that concentrated in urban area
- ❑ Poverty level and local culture highly affecting the community's adaptive capacity

- ❑ Residential development pattern often move towards climate disaster-prone area
- ❑ Natural Resources dependent economy (affected by climate change, e.g. agriculture, fisheries, energy etc.)



Climate-related Disaster and Development



In the past decade, **Majority** of disaster event in Indonesia is **hydrometeorological disaster**



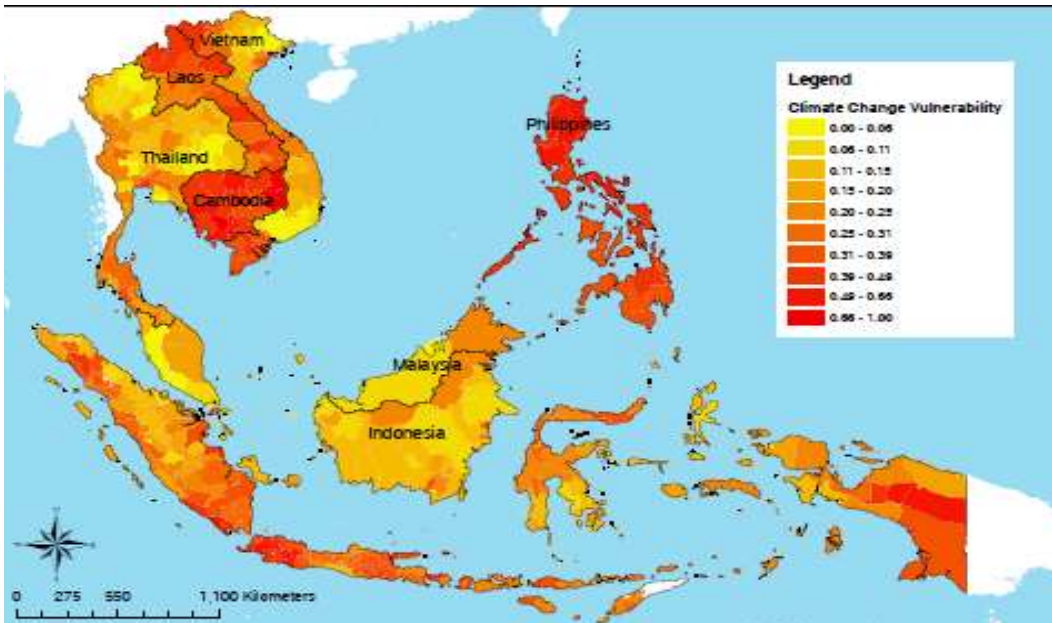
Climate change is predicted to cause a **6.7% drop of GDP in 4 South East Asia countries** in 2100 (ADB, 2013)

In 2025, around **31% of global income** will be based in countries facing high or extreme risks from climate change impact; where Indonesia is amongst the high risk countries (Maplecroft, 2013).

Losses from Jakarta flooding in **2002 and 2007** reaches **1,5 trillion and 2 trillion IDR** consecutively (Bappenas, 2007)

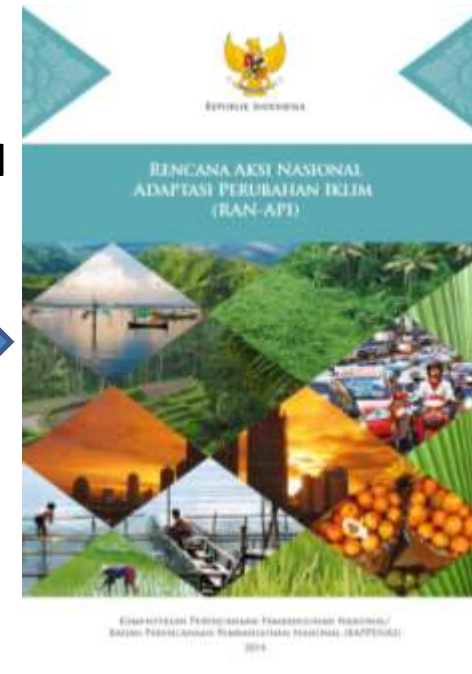
Between 1981-1990, rice production experience **annual losses of around 100000 tonnes/regency**. It is predicted by 2050, there will be a **rice deficit** that reaches **60 million tonnes** (Boer, 2003)

Translating Vulnerability and Risk into Actions



7 cities and regencies in Indonesia categorised as the **Top 10 highly vulnerable area** to climate change; where **Jakarta** comes out as the top **most vulnerable region** (SIDA, 2009)

Drives the need
to develop



ROLE OF NATIONAL ACTION PLAN ON CLIMATE CHANGE ADAPTATION (RAN-API) IN DEVELOPMENT PLANNING SYSTEM

How Indonesia Move Towards National Action Plan for Climate Change Adaptation (RAN-API)

RPJMN 2010-2014

- | | |
|-------------------------------------|--|
| 1 Bureaucracy and Governance Reform | 9 Environment and Disaster Management |
| 2 Education | 10 Politics, Law and Security |
| 3 Health | 11 Disadvantaged, Forefront, Outer and Post-conflict Regions |
| 4 Poverty Eradication | 12 Economic |
| 5 Food Security | 13 Culture, Creativity an Technological Innovation |
| 6 Infrastructure | 14 People Welfare |
| 7 Investment Climate | |
| 8 Energy | |

RKP 2010
RECOVERY OF
NATIONAL ECONOMIC
AND SUSTAINING
PEOPLE WELFARE

RKP 2011
ACCELERATION OF
JUST ECONOMIC
GROWTH
SUPPORTED BY
STRENGTHENING
GOVERNANCE AND
LOCAL-CENTRAL
SYNERGY

RKP 2012
"EXPANSION AND
ACCELERATION OF
JUST AND
INCLUSIVE
ECONOMIC
GROWTH FOR THE
IMPROVEMENT OF
PEOPLE WELFARE"

RKP 2013
STRENGTHENING
DOMESTIC
ECONOMY FOR
THE
IMPROVEMENT
AND EXPANSION
OF PEOPLE
WELFARE

RKP 2014
STRENGTHENING
OF NATIONAL
ECONOMY TO
IMPROVE JUST
PEOPLE WELFARE

1. Sustainable Development Mainstreaming
2. Cross-sectoral Program: **Climate Change**

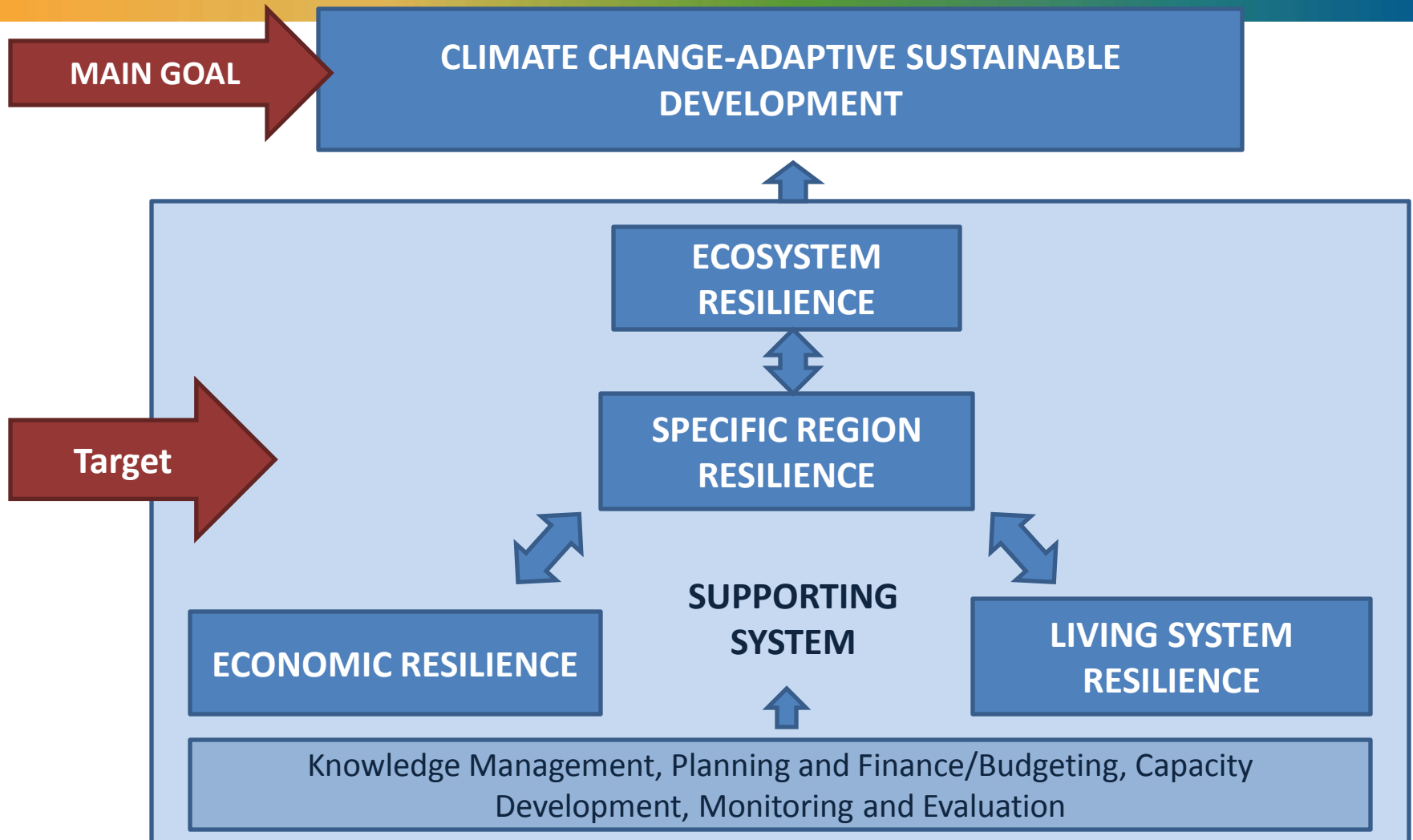
1. PERPRES 61/2011 RAN GRK
2. PERPRES 71/2011 GHG INVENTORY
3. Adaptation Strategy

Initial
Development
of RAN-API

Consultation and
socialization of
RAN-API

RAN API
Launching and
Pilot Location

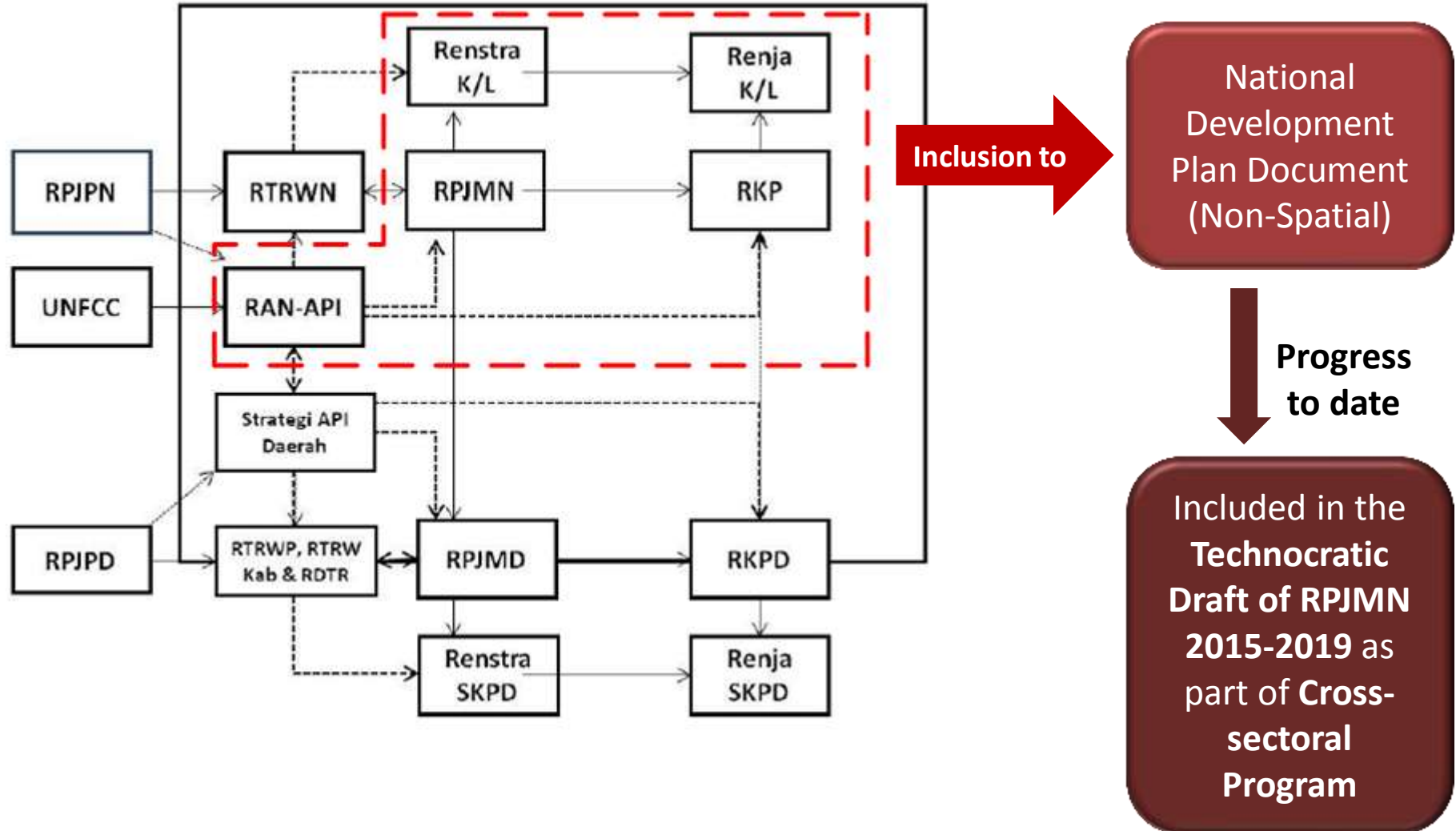
General Framework of RAN-API



Sector and Sub-sector of RAN API

Sector	Sub Sector
Economic Resilience	<ul style="list-style-type: none">• Food Security• Energy Independence
Living System Resilience	<ul style="list-style-type: none">• Health• Housing• Infrastructure
Ecosystem Resilience	<ul style="list-style-type: none">• Ecosystem and Biodiversity
Specific Region Resilience	<ul style="list-style-type: none">• Urban• Coastal and Small Islands
Supporting System	<ul style="list-style-type: none">• Data and Information• Capacity Building• Research and Development

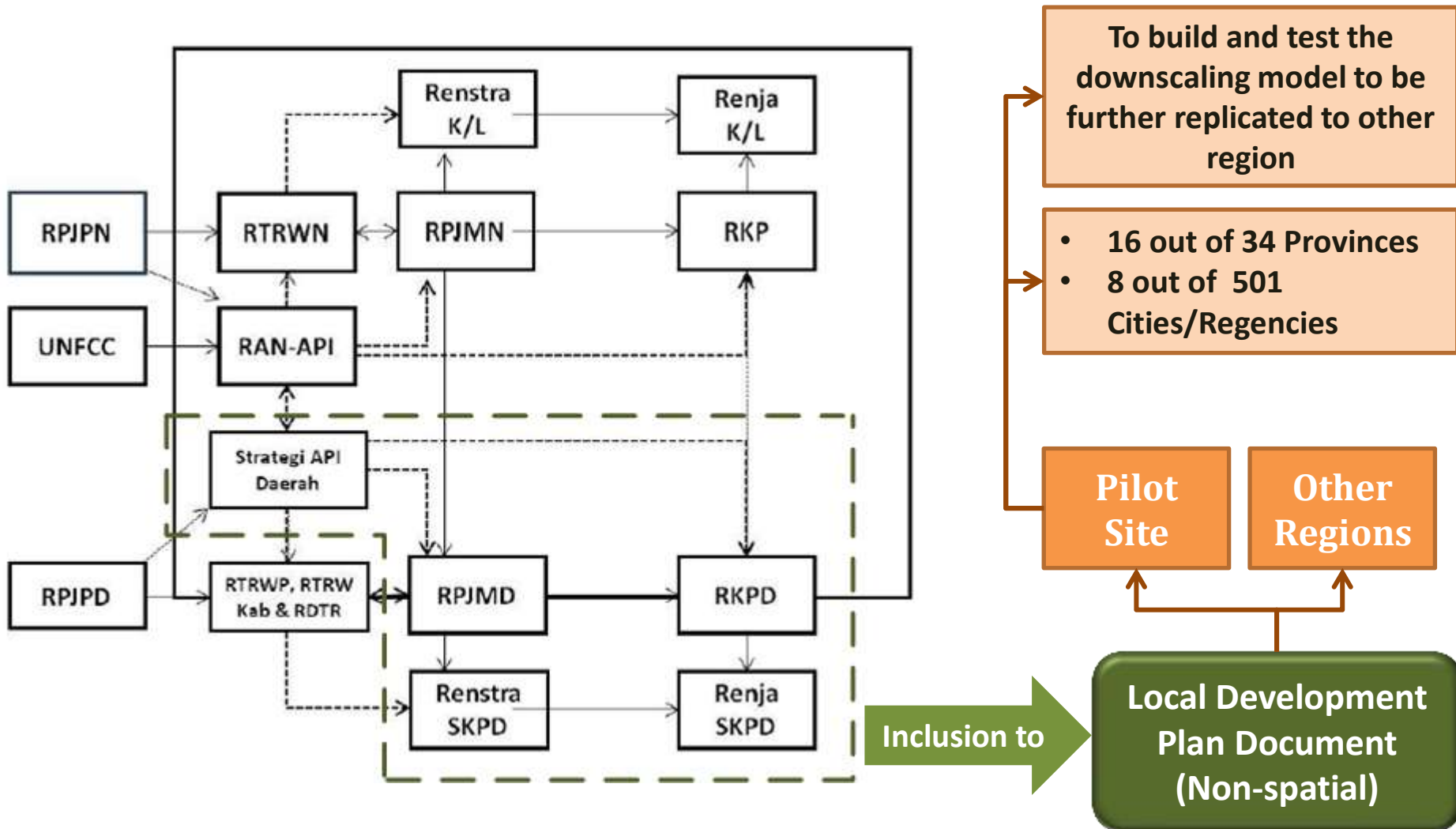
Future of CCA and RAN API in relation to National Development Planning System



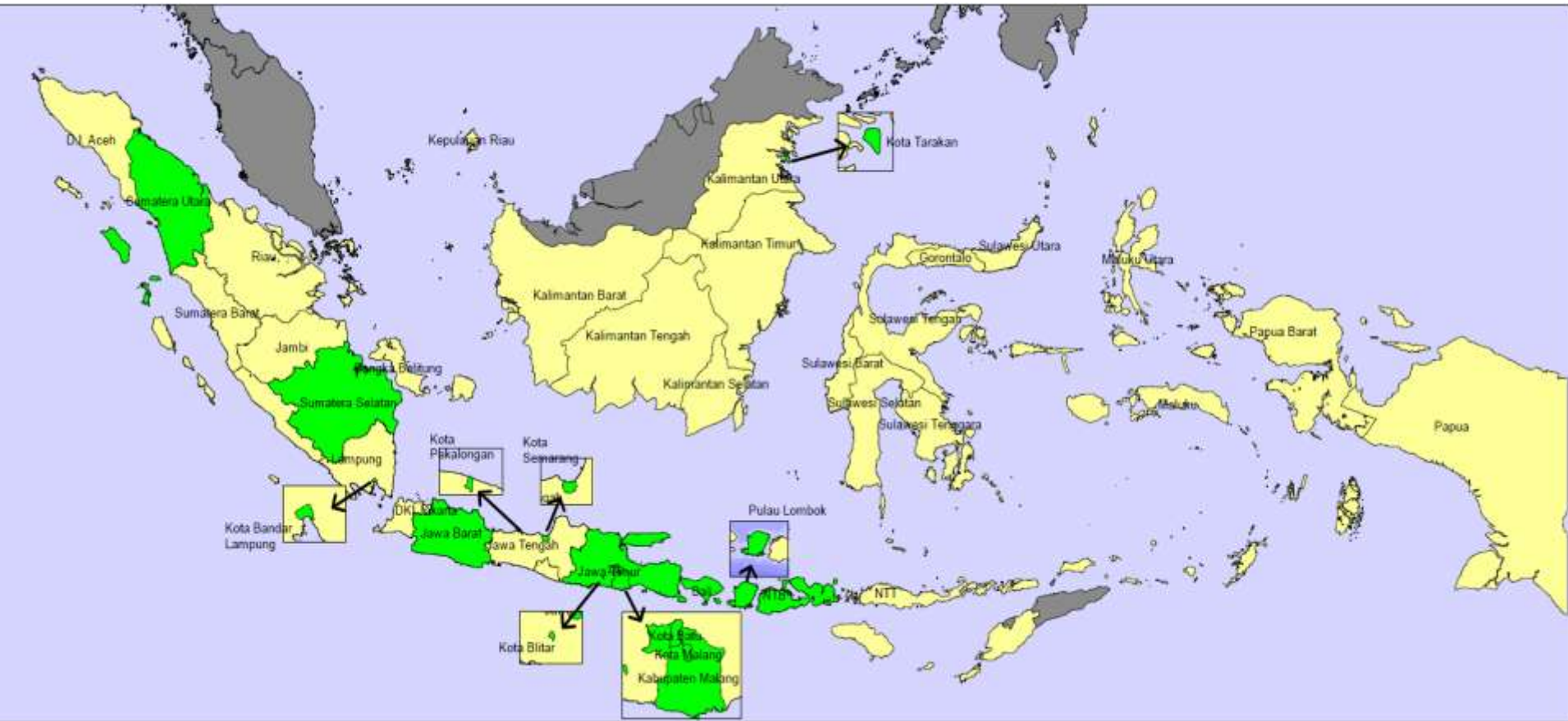
How the Line Ministries Could Adopt RAN API in their Strategic Plan

	Activity	Location	Programs/Activities in RKP
Living System Sector			
Health Sub-Sector			
Cluster 1. Identification and control of factors of vulnerability and risk to public health posed by climate change	Updates the risk assessment and adaptation to climate change in the health regencies / city level	2015-2019 High-risk areas in 33 provinces	<ul style="list-style-type: none"> Research and Development of Applied Clinical and Clinical Epidemiology Health Information and Data Processing (Kemenkes, Bappenas, BIG, BMKG, KemenLH dan DNPI)
Housing Sub-Sector			
Cluster 2. Development and Management of Settlement	Adjustment settlements infrastructure in disaster-prone areas of climate change	2015-2019 Flood and landslide prone areas	Infrastructure adjustment settlements in disaster prone areas (KemenPU, Kemenpera, dan KKP)
Infrastructure Sub-Sector			
Cluster 1. Research and Development Infrastructure Security Concept	Implementation of research and development on improving the resilience of adaptive infrastructure to climate change	National	Implementation of spatial planning program: (KemenPU dan KKP)

Future of CCA and RAN API in relation to Local Development Planning System



RAN-API Pilot Areas



How the Local Government Could Adopt RAN API in their Strategic Plan

RPJMD Content

ADAPTATION STRATEGY

Preliminary

Overview of Regional and
Local Financial Conditions

Analysis of Strategic Issues

Vision, Mision, Objective
and Strategy

Strategy and Policy
Direction

Public Policy and Regional
Development Program

Indicative Priority Program
Plan and Funding Needs

REVISED INDICATIVE
PRIORITY PROGRAM PLAN
and FUNDING NEEDS

Vulnerability and
Risk Assesment

CCA Strategy

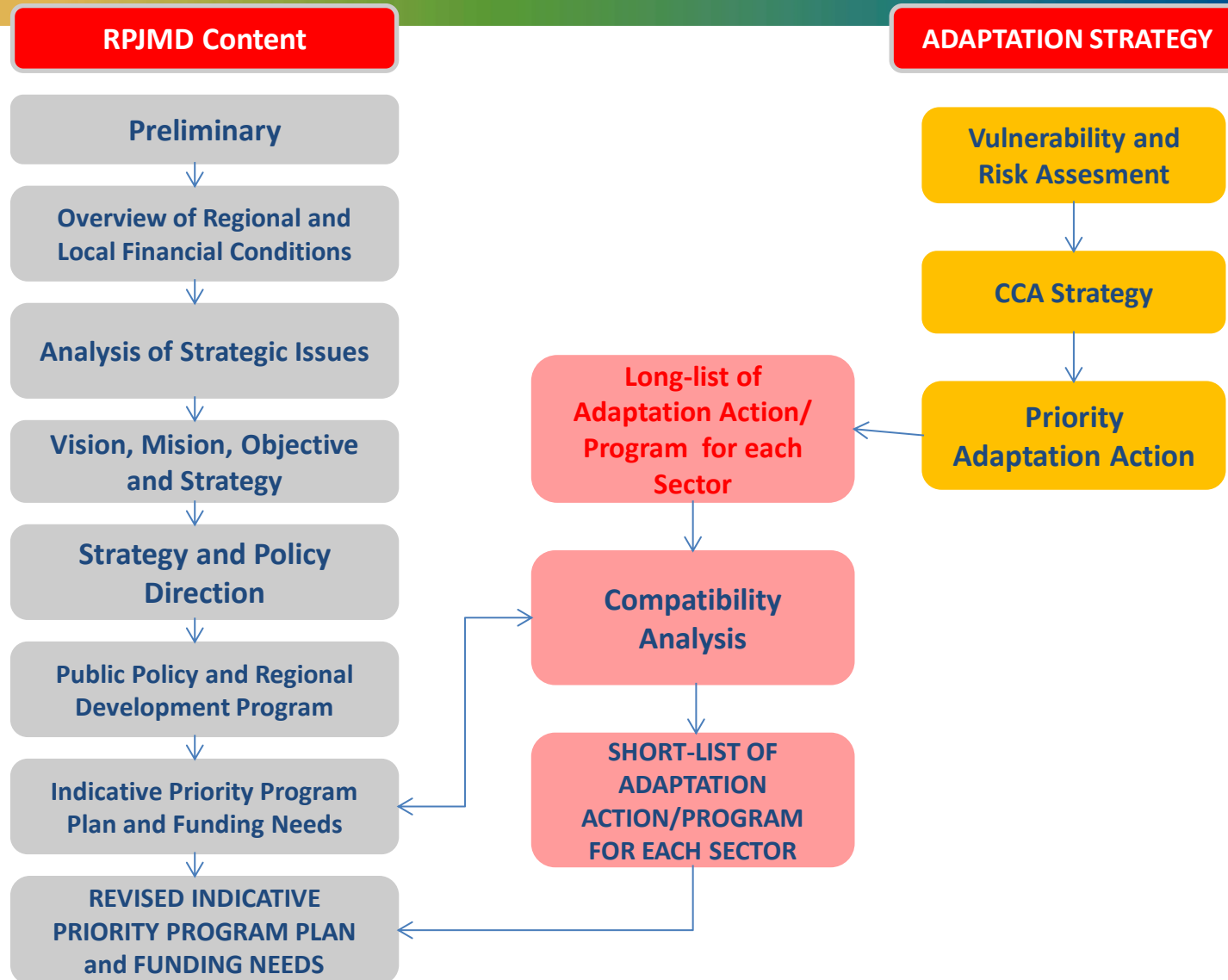
Priority
Adaptation Action

Long-list of
Adaptation Action/
Program for each
Sector

Compatibility
Analysis

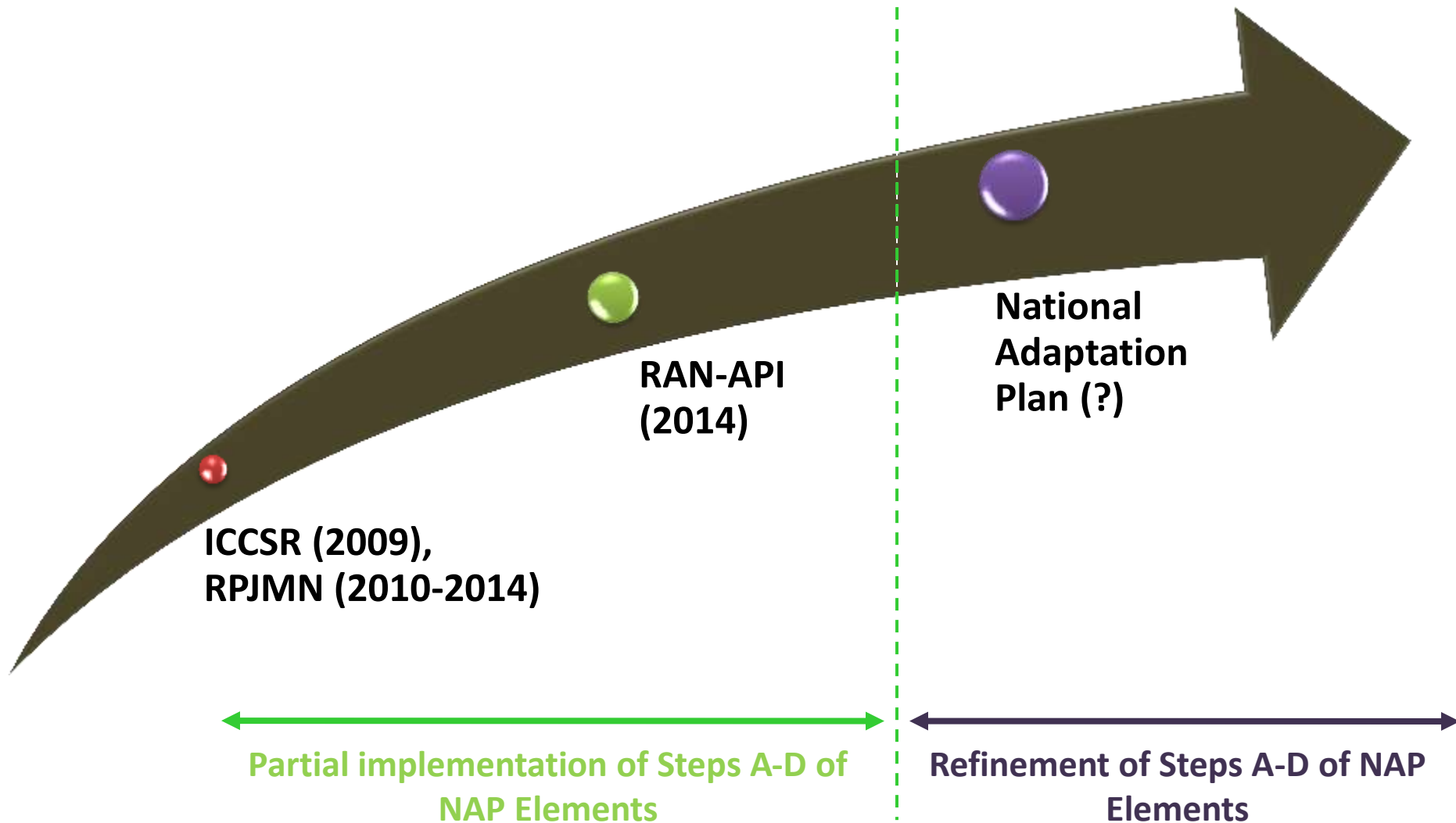
SHORT-LIST OF
ADAPTATION
ACTION/PROGRAM
FOR EACH SECTOR

Scheme for CCA
Integration Into
Regional Mid Term
Development Plan
(RPJMD)

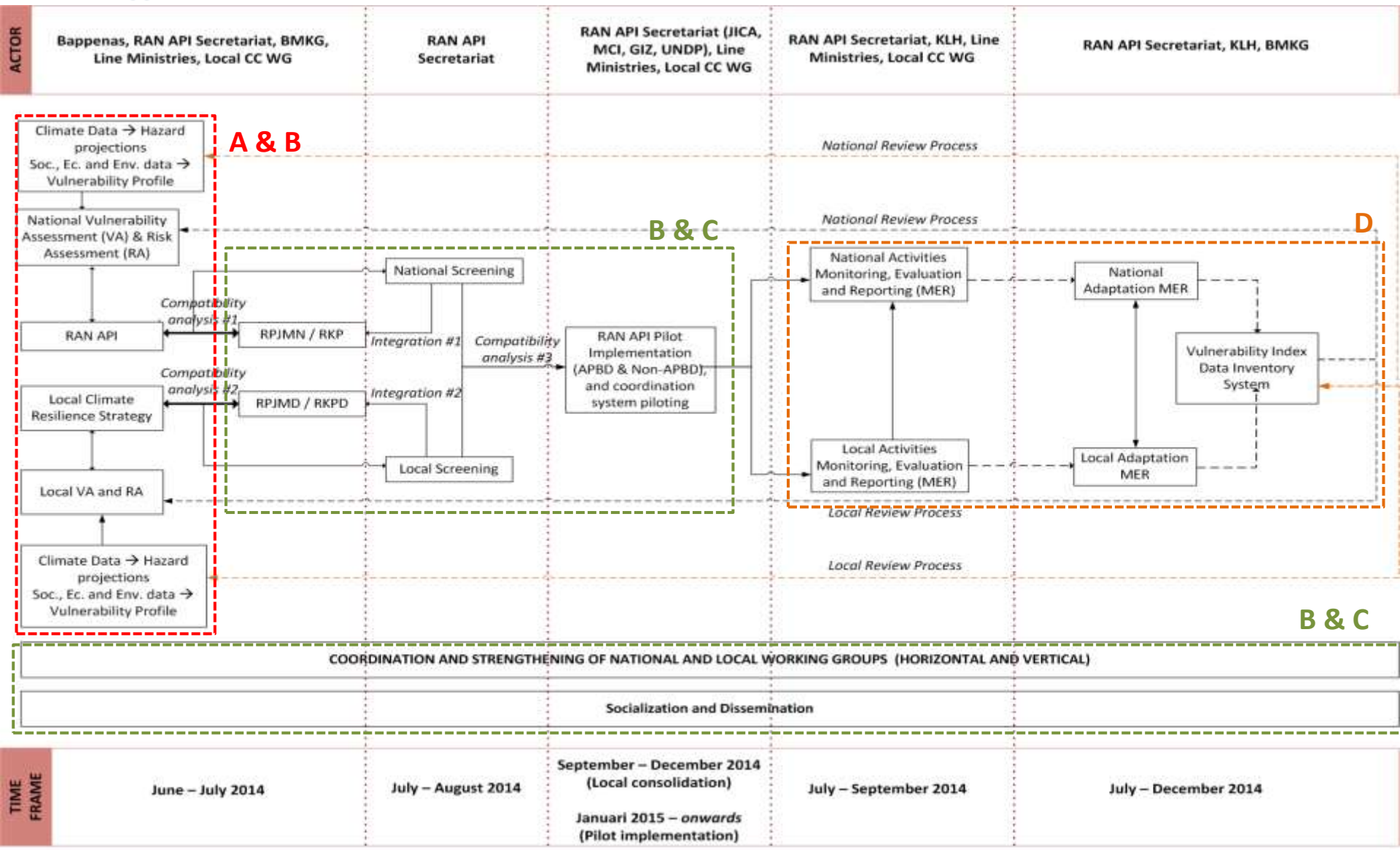


NEXT STEPS

Indonesia will Move Beyond RAN API



Our Current Scheme



Way to Move Forward

PILOT IMPLEMENTATION



Show the gaps
and needs on

Vertical & Horizontal
Coordination
Scheme

Technical and
Institutional
Capacity

Integrated with
Existing Data
Information System

Approach for VA
and Adaptation
Options

Data Availability at
National and Local
Level



Utilize for

REFINEMENT OF RAN API & LONG-TERM STRATEGY



Thank You